

Lincoln County Community Health Assessment 2013



Lincoln County Health Department

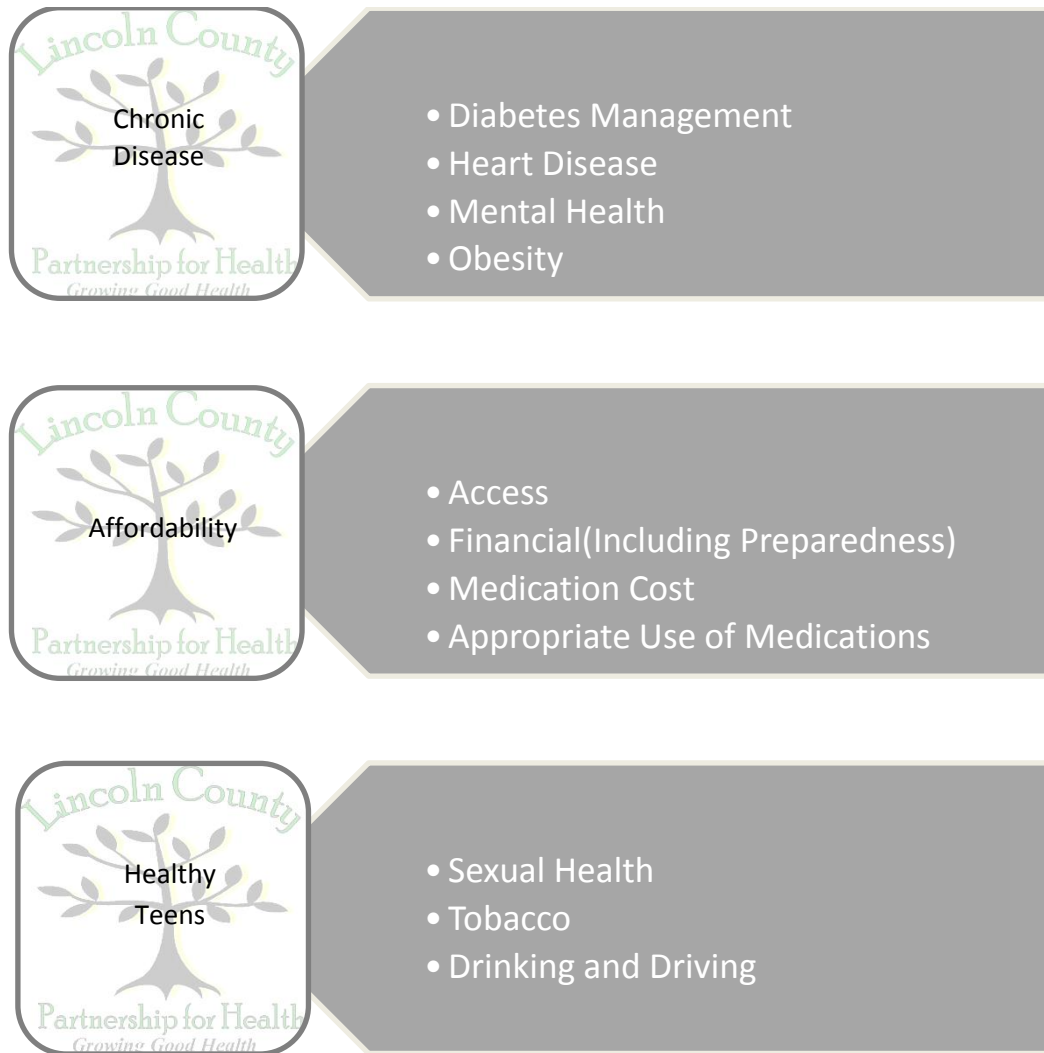
Lincoln County Partnership for Health

Table of Contents

Lincoln County Partnership for Health	3
Introduction	4
Community Health Priorities 2013-2017	5
Lincoln County Demographic Statistics	6 - 10
Population	6
Education	7
Economic Factors	8 - 9
Access to Care	10
Lincoln County Health Statistics	11
Maternal and Child Health	11
Communicable Disease	12
Chronic Disease	13 - 31
Oral Health	32
Immunizations	32
Environmental Health	33
Mental Health	34
Access to Care	35
Executive Summary of Findings	35
Statistical Resources	36
Overview of Resources	37 - 41
Health Care Resources	37 - 39
Community Resources	40 - 41
Lincoln County Guide to Services	42 - 44
2013 Community Health Assessment Survey: Results	45 - 52
Appendix A:	
Community Health Assessment Team & 2013 Board of Health Members	53 - 54
Appendix B:	
2013 Community Health Assessment Survey	55 - 62
Appendix C:	
Lincoln Economic Development Association 2013 Fact Book	63

Lincoln County Partnership for Health

Lincoln County Partnership for Health is a community-based partnership that brings together community members, leaders and organizations to address local health issues. The Partnership divided into three sub groups to address the needs of Lincoln County citizens for 2010-2013.



A complete Partnership organization list can be found in Appendix A.

INTRODUCTION

What is a community health assessment?

A community health assessment (CHA) is a systematic analysis of the health status of a given population that is used to identify priority health concerns in a community. The ultimate goal of this type of examination is to develop strategies to address local health needs. The CHA is a required document that must be submitted for accreditation by local health departments and is utilized by agencies and organizations to educate the public about the health of the community, obtain grant funding and form collaborative partnerships.

Every four years local health departments in conjunction with community and state partners conduct a CHA. The purpose of the CHA is to:

- Evaluate the health status of each county in relation to the state's health objectives
- Identify and prioritize health issues within individual counties that do not meet state objectives and/or pose a threat to the health of the community
- Develop strategies to address priority health concerns

Data Collection and Methodology

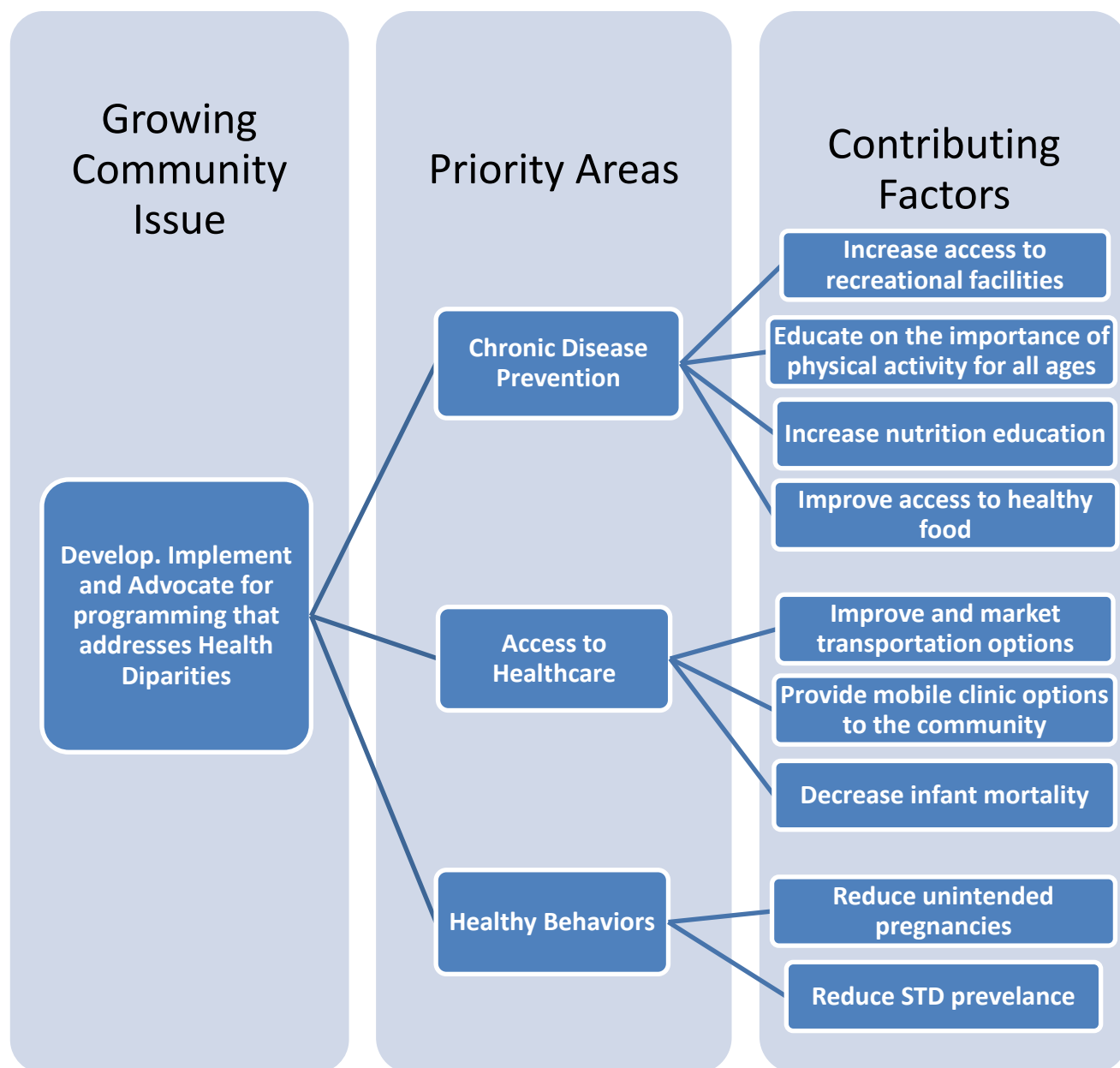
Lincoln County specific data is not available for many health indicators. To supplement regional data from the North Carolina State Center for Health Statistics *Behavioral Risk Factor Surveillance System* and mortality data, the Lincoln County Partnership for Health committee members decided to collect primary data from a 35 question survey utilizing a convenience sample within the community. 427 surveys were collected and analyzed using Survey Monkey. Surveys were distributed to local libraries, flu clinics, Partnership for Health members/ agencies, Board of Health, health department clients, website, and daycare centers.

Community Health Priorities and Next Steps

Lincoln County Board of Health and Partnership for Health

On November 5, 2013, the Lincoln County Board of Health and on November 18, 2013, the Partnership for Health was presented with the statistical data that will be used in the 2013 Community Health Analysis. Following the review of the leading causes of mortality and morbidity, risk factors, disparities and the 2013 Community Health Assessment Survey results for Lincoln County, the Partnership for Health engaged in an extensive conversation regarding the meaning of the data. The discussion noted emerging issues and the Partnership for Health identified 3 priority areas for future programming.

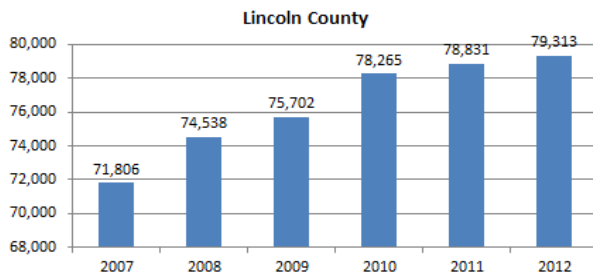
The committees selected the following priorities for 2013 – 2016.



Lincoln County Demographic Statistics

Population

Total Population 2007-2012



Lincoln County's population continues to grow. North Carolina has grown 2.3% in the past two years and Lincoln County grew 1.3%: from 78,265 in 2010 to 79,313.

U.S. Census

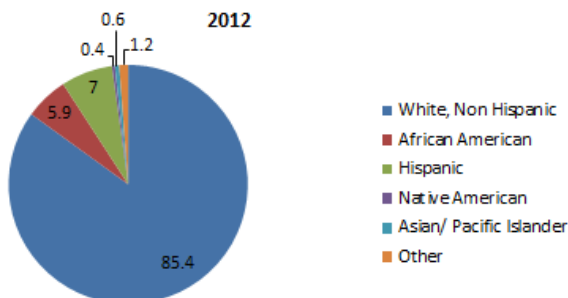
2010 Population Comparison for Select (Peer) NC Counties Profile

	Edgecombe County	Franklin County	Granville County	Lincoln County	Nash County	Pender County
Population	56,552	60,619	59,916	78,265	98,840	52,217
Population, percent change, 2000 to 2010	1.70%	28.30%	23.50%	22.70%	9.60%	27.10%
Percent of Females	53.60%	50.20%	46.60%	50.40%	52.00%	50%
Percent of Males	46.40%	49.80%	53.40%	49.60%	48.30%	50%
Percent Under 5 Years of Age, 2009	6.60%	6.60%	5.70%	5.90%	6.80%	5.90%
Percent Under 18 years old, 2009	24.50%	24.50%	22.30%	23.60%	24.60%	22.80%
Percent of 65 Years of Age and Older, 2009	14.30%	12.70%	12.40%	13.20%	15.20%	15.10%
Percent of Whites	38.80%	66.00%	60.40%	89.40%	55.90%	76.10%
Percent of Blacks	57.40%	26.70%	32.80%	5.50%	37.20%	17.80%
Percent of Asian/Pacific Islanders	0.20%	0.50%	0.50%	0.50%	0.80%	0.40%
Percent of Hispanics/Latinos	3.70%	7.90%	7.50%	6.70%	6.30%	6.10%
Percent of Native American/Alaska Native	0.30%	0.50%	0.60%	0.50%	0.70%	0.60%

US CENSUS, 2010

Lincoln County

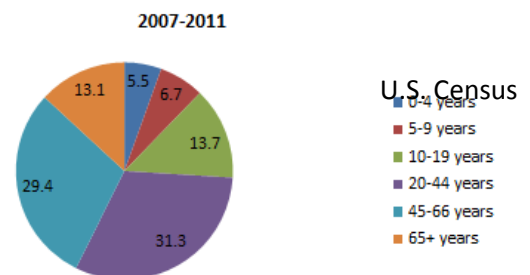
Population by Race (Percentage)



US CENSUS, 2012

Lincoln County

Population by Age (Percentage)

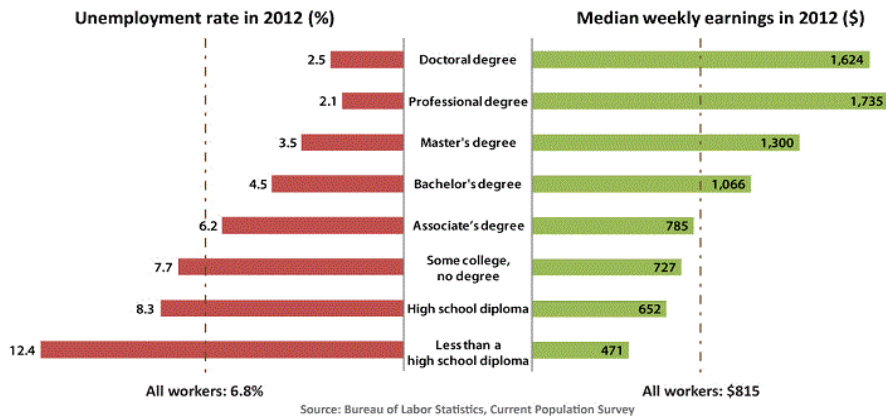


U.S. Census

US CENSUS, 2007-2011

Education

Earnings and unemployment rates by educational attainment



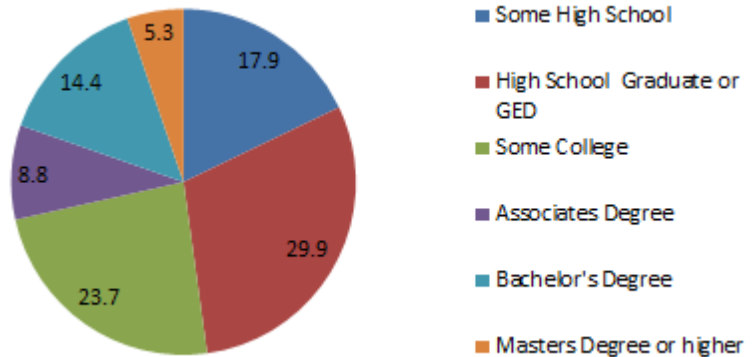
Education Pays

Education Pays: People with lower educational attainment receive less medical care and have poorer health outcomes.

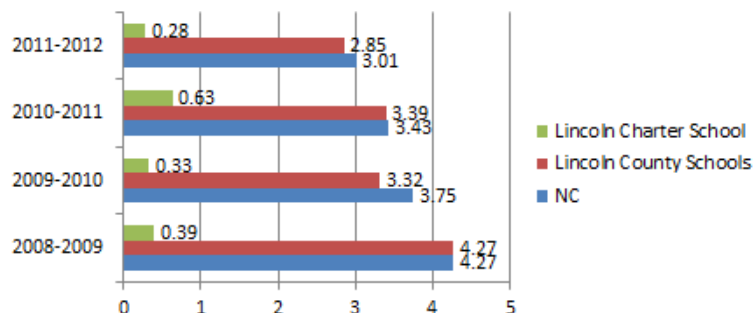
Educational Attainment

Lincoln County is slightly below the state average, but has continually improved over the years. Since 2009 our high school graduation rate has improved 6.2% with a college participation increase of 10.4% so that just about half of our Lincoln County residents are going to college.

- LEDA 2013 Fact Book, 2010 US Census



Education: Dropout Rate Grade 9-12



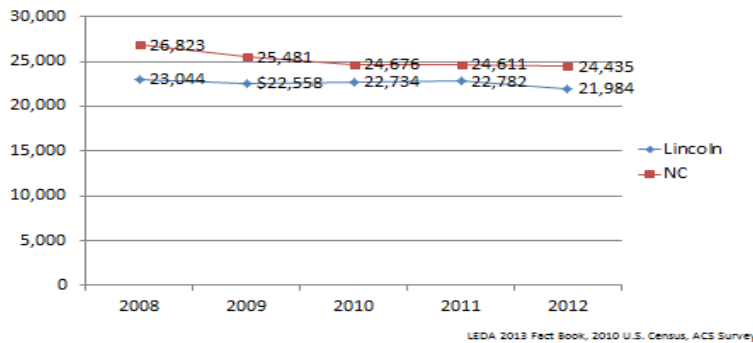
Drop Out Rates

Lincoln County Schools and Lincoln Charter School Dropout rates continue to stay below the NC rate.

NC DPI
Reference page 12

Economic Factors

Economic Factors: Per Capita Income



Per Capita Income

Lincoln County has stayed in sync with the growth and decline of the economy in NC.

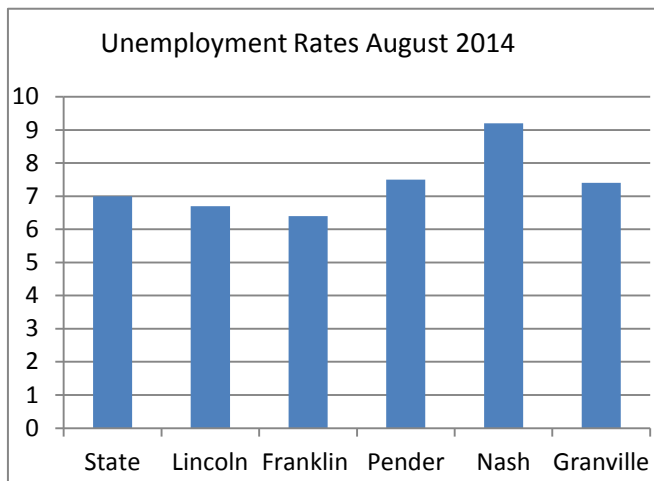
LEDA 2013 Fact Book,
2010 US Census,
ACS Survey

Income Levels Comparison, 2010

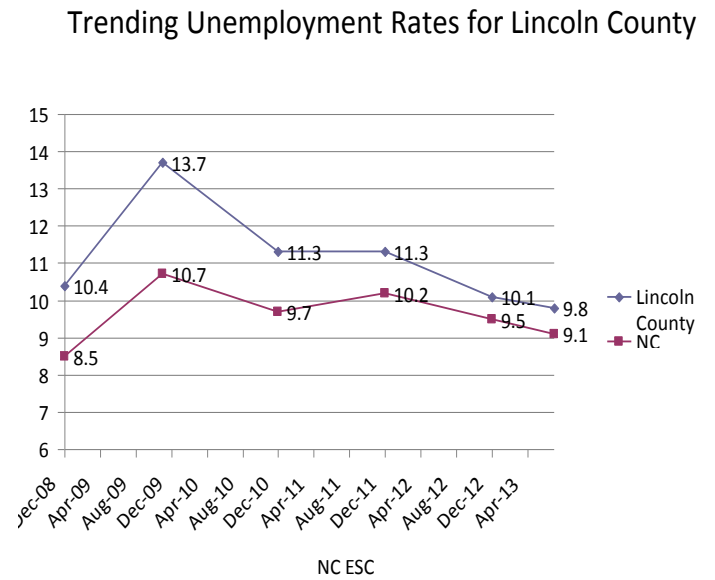
	Edgecombe County	Franklin County	Granville County	Lincoln County	Nash County	Pender County
Less than \$10,000	3,145	1,985	1,484	1,837	3,512	1,964
\$10,000 to \$14,999	2,239	1,585	1,356	1,759	2,648	1,074
\$15,000 to \$24,999	3,378	2,424	2,302	3,996	4,363	2,313
\$25,000 to \$34,999	2,611	3,370	2,240	3,404	4,396	2,575
\$35,000 to \$49,999	3,326	3,504	2,861	4,571	6,288	3,258
\$50,000 to \$74,999	3,618	4,214	4,698	5,824	6,876	4,040
\$75,000 to \$99,999	1,820	3,033	2,146	3,156	4,229	2,250
\$100,000 to \$149,999	1,164	1,871	2,037	3,155	3,589	1,851
\$150,000 to \$199,999	215	559	445	1,033	883	537
\$200,000 or more	85	247	251	673	978	347
Median household income	32,655	43,710	48,210	47,450	44,499	44,338

Source: U.S. Census Bureau, 2006-2010 American Community Survey

- The median household income for Lincoln County Residents was \$47,545 for 2011 and is expected to rise to \$52,563 by 2016. The average household income for Lincoln County Residents was \$58,071 for 2011 and is expected to rise to \$62,995 by 2016. Both the median and average household incomes for 2011 and expected incomes for 2016 are well above the 2013 Federal Poverty Level Guidelines for an average family of four which is \$23,550. The average household size for Lincoln County residents was 2.56 in 2011 and expected to be 2.54 in 2016. Federally facilitated marketplaces used the 2013 guidelines to determine eligibility for Medicaid and the Children's Health Insurance Program (CHIP) until the 2014 guidelines were released in February 2014. This is encouraging news for Lincoln County Residents.
 - o 2014 Federal Poverty Guidelines
- The number of owner occupied housing units was 23,138 in 2011 and expected to rise to 25,305 by 2016. The number of renter occupied housing units was 7,584 in 2011 and expected to rise to 8,079 by 2016. Considering these facts, one can see that the rise in the number of owner occupied verses renter occupied homes is expected to rise between 10.6% and 10.9%.
 - o 2013 LEDA Fact Book



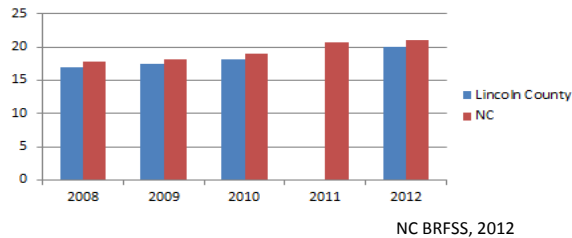
North Carolina Department of Commerce
Labor & Economic Analysis Division, 2014



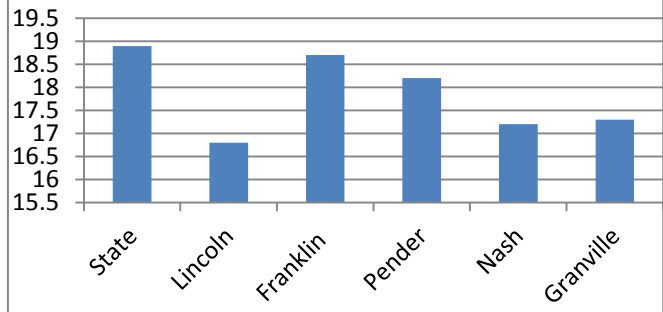
Lincoln County has a higher unemployment rate than that of NC. The economic and educational factors are correlated to access to care, quality of care, quality of life (mental and physical health, chronic disease) and the cost of increased health care to the county.

Access to Care

Uninsured in Lincoln County



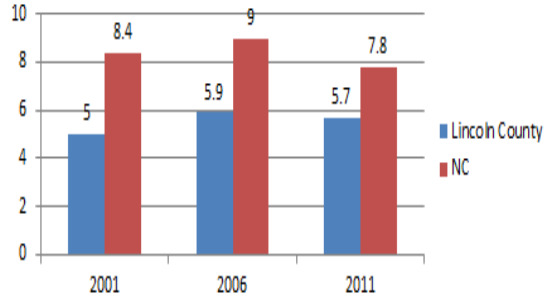
Uninsured Rates for 2010-2011



North Carolina Institute of Medicine, 2010-2011

According to the BRFSS report, Lincoln County Region (Piedmont Region) uninsured rate is continuing to increase, but we are still better than our peer counties. Due to a change in data reporting Lincoln County does not have reportable data in 2011 and the years 2011 and 2012 are weighted differently than in previous years.

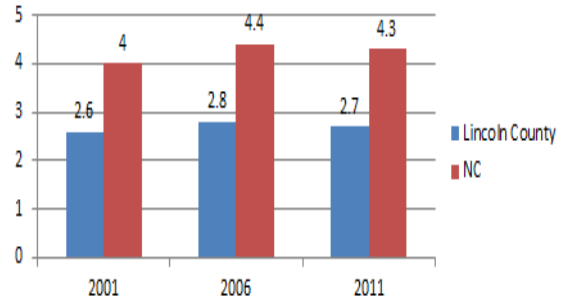
Access to Care: Health Care Providers Primary Care Physicians



Trend Data: Rates per 10,000 residents

NC SCHS

Access to Care: Health Care Providers Dentists



Trend Data: Rates per 10,000 residents

NC SCHS

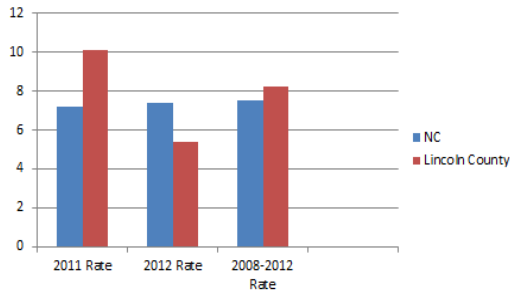
Compared to the state rate, Lincoln County residents have fewer physicians and dentists available to them. Emergency room visits increase with the lack of access to care for Lincoln County residents.

NC SCHS

LINCOLN COUNTY HEALTH STATISTICS:

Maternal and Child Health

Infant Mortality

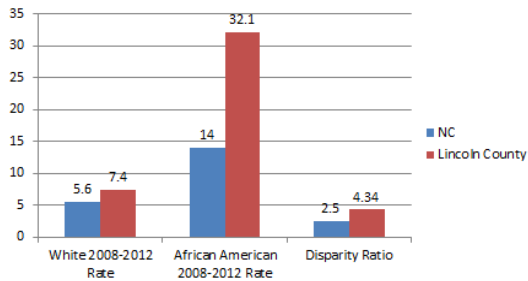


NC DHHS SCHS August 2013

The rate of infant mortality is a key reflection of the health of the county. Lincoln County's infant mortality rate is highly influenced by small changes given the size of our county, but this is something to closely monitor. Lincoln County has stayed below the NC rate for teen pregnancy.

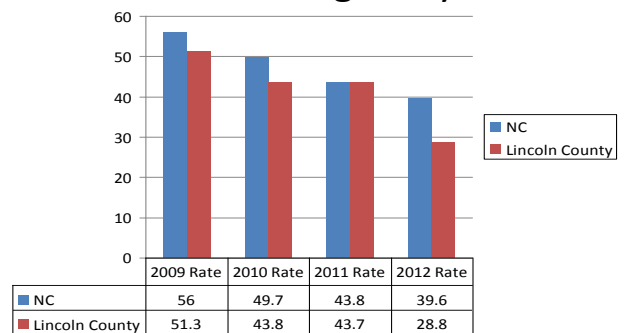
NC SCHS, 2013

Infant Mortality Racial Disparities



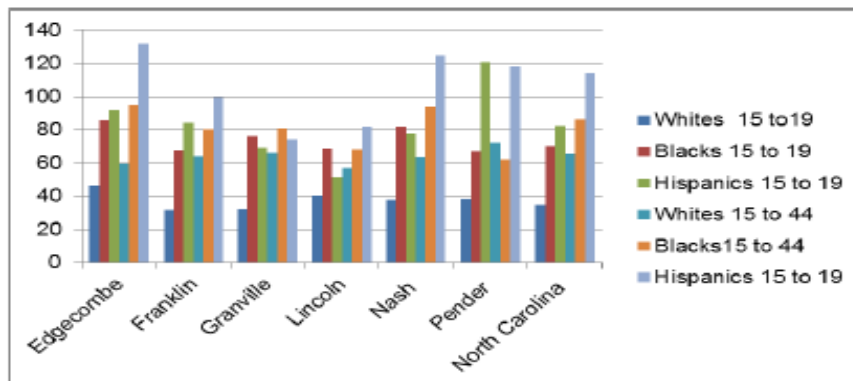
NC DHHS SCHS AUGUST 2013

Teen Pregnancy



NC DHHS SCHS AUGUST 2013

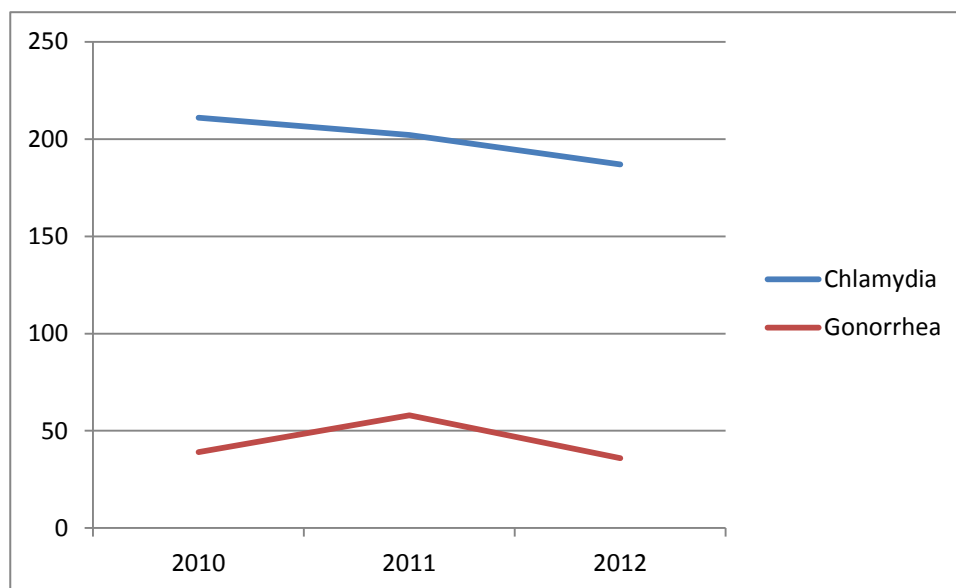
2010 Total Pregnancy Rate by Race and Age, per 1,000



Source: North Carolina State Center for Health Statistics

Communicable Disease

Lincoln County Chlamydia and Gonorrhea Cases 2010-2012



-TATP Reported
Case Counts STD
2010-2012

- Communicable disease includes sexually transmitted infections. Sexually transmitted infections, or STIs, can cause long term health problems, particularly in women and infants. Some of the health complications that arise from STIs include pelvic inflammatory disease (PID), infertility, tubal or ectopic pregnancy, cervical cancer, and perinatal or congenital infections in infants born to infected mothers. In Lincoln County, our numbers for Chlamydia and Gonorrhea are decreasing. The Lincoln County Health Department has a Communicable Disease Clinic and a Family Planning Clinic that test for STIs. HIV and AIDS patients are referred to the state Disease Intervention Specialist for further case management and has increased the availability of STD clinics. This increase in services has helped Lincoln County continue to stay at a lower disease prevalence rate than our peer counties.

STD's Rates	<u>HIV Disease</u>	<u>Chlamydia</u>	<u>Gonorrhea</u>	<u>Syphilis</u>
Edgecombe County	46.3	1245.8	524.6	13.5
Franklin County	11.6	209.7	94.9	5
Granville County	15.6	374.4	161.3	3.5
Lincoln County	6.6	276.2	51.3	0
Nash County	16.9	686.1	263.9	10.6
Pender County	5.7	204.3	43.9	0
North Carolina	15.9	449.5	150.9	7.7

Source: North Carolina State Centers for Health Statistics

CHRONIC DISEASE

Chronic disease is persistent and individuals affected have a long course of illness. Chronic diseases include heart disease, cancer, diabetes and asthma. As a nation, 75% of our health care dollars goes to treatment of chronic diseases. These persistent conditions attribute to the nation's leading causes of death and disability. **Many of these diseases could have been prevented, but instead caused lifelong disability, compromised quality of life, and burdening health care costs.** Lincoln County's growing minority population and aging population are continuing to be at a greater risk of developing many chronic diseases. Issues that are detected early-on through various screenings are more easily controlled or reversed than issues that are found after chronic disease onset has taken place.

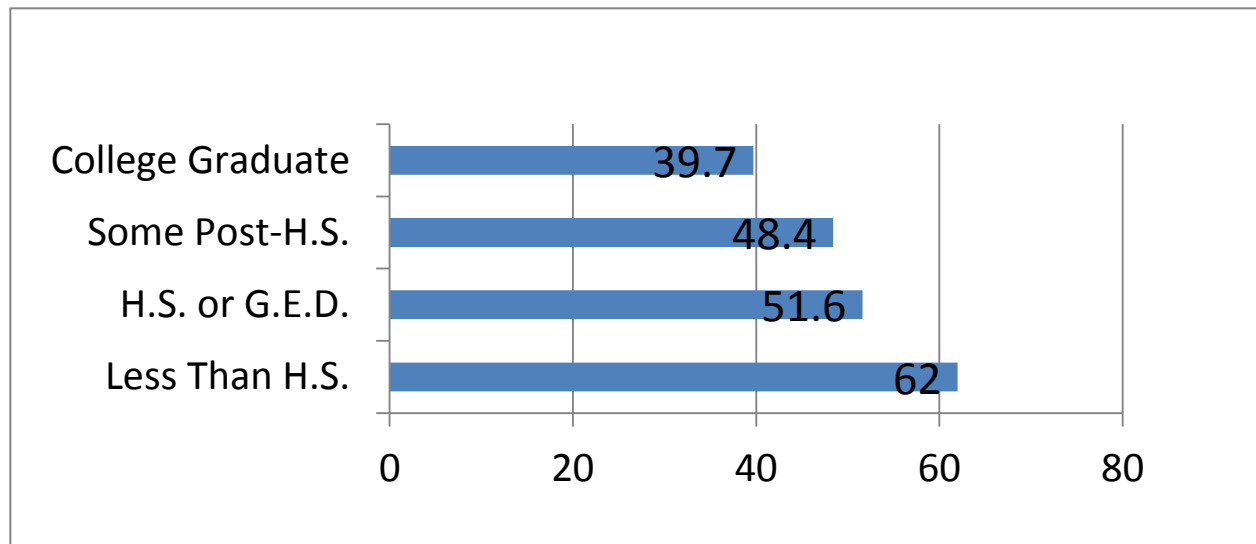
Leading Causes of Deaths

Leading Causes of Deaths	Edgecombe	Franklin	Granville	Lincoln	Nash	Pender	North Carolina
Heart Disease	256.7	170	184.2	246.2	213.6	177.9	187.3
Stroke	93.2	38.3	47	50.9	55.2	44.2	61.8
Total Cancer	243.2	193.6	243.1	193.1	219	222.1	190
*Colon Cancer	23.7	14.7	27.7	16.1	21.9	15.8	16.6
*Breast Cancer	42.3	27	33.3	22.3	32.8	31.5	26.9
*Lung Cancer	72.5	60.5	71.9	66	65.4	70.2	58.4
*Prostate Cancer	24.9	22.9	16.1	16.2	19.1	21.3	19.1
Respiratory Disease	38	43.4	47.4	57.7	51.3	48.1	46.8
Diabetes	37.6	26	38.2	24.7	28.3	38.7	23.2
Pneumonia / Influenza	19.2	21.2	14.7	19.2	27.7	16.2	18.4
Motor Vehicle Injuries	20.7	23.6	21.4	21.2	20.2	26	16.8
Other Injuries	28.9	26.7	26.7	29	25.1	31.6	28.7
Suicide	10.9	15.7	11.6	13.9	12.6	15	12.3
Homicide	10.9	5.8	4.2	3.8	12.4	3.2	6.6
Alzheimer's Disease	23.2	12.7	30.9	18	20.2	15.8	29.5
HIV Disease	15.8	3.1	1.7	0.5	8.3	2.8	4

Source: State Center for Health Statistics

- Lincoln County heart disease rates continue to remain higher than our peer counties and the state.

Percentage of Lincoln County Region Residents reporting at least ONE Chronic Disease, by Educational Attainment, BRFSS 2012

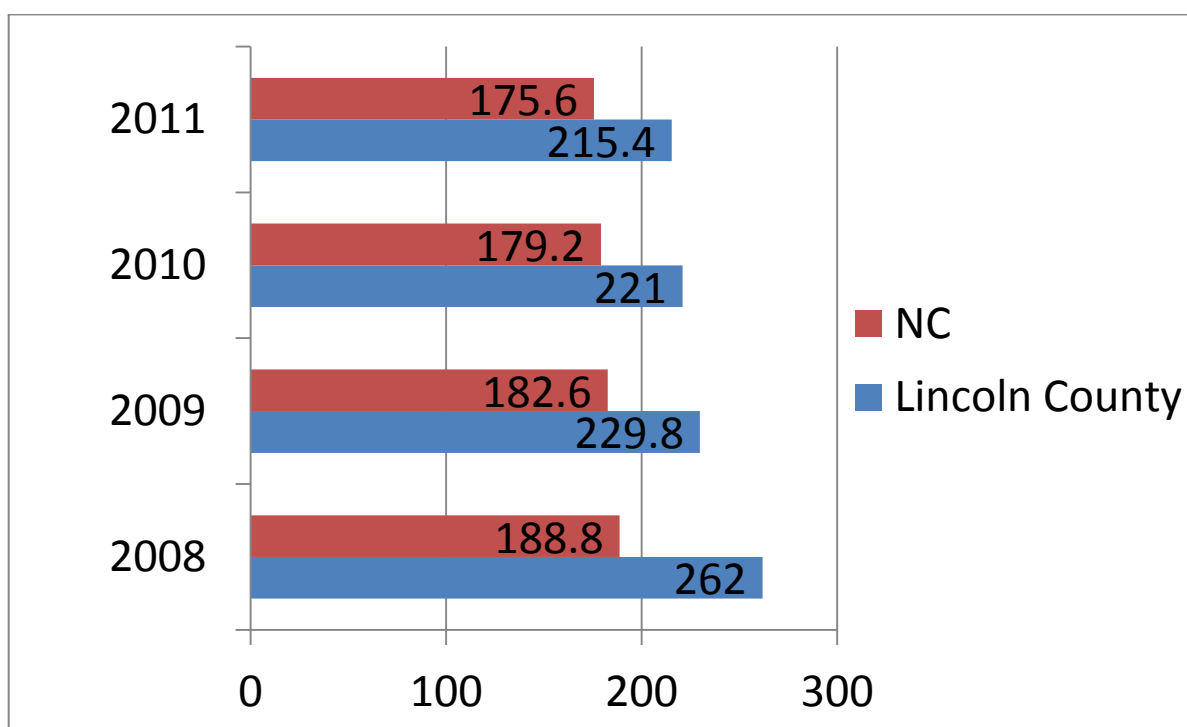


-NC SCHS

- Lincoln County Region residents were statistically more likely to report that they had at least **ONE chronic disease condition**, as educational attainment status decreased.
- Lincoln County Region residents and North Carolina residents reporting that they had at least ONE chronic disease condition answered statistically similar at 49% and 50.3%, respectively.

HEART DISEASE and STROKE

Heart Disease Mortality – Death Rates per 100,000



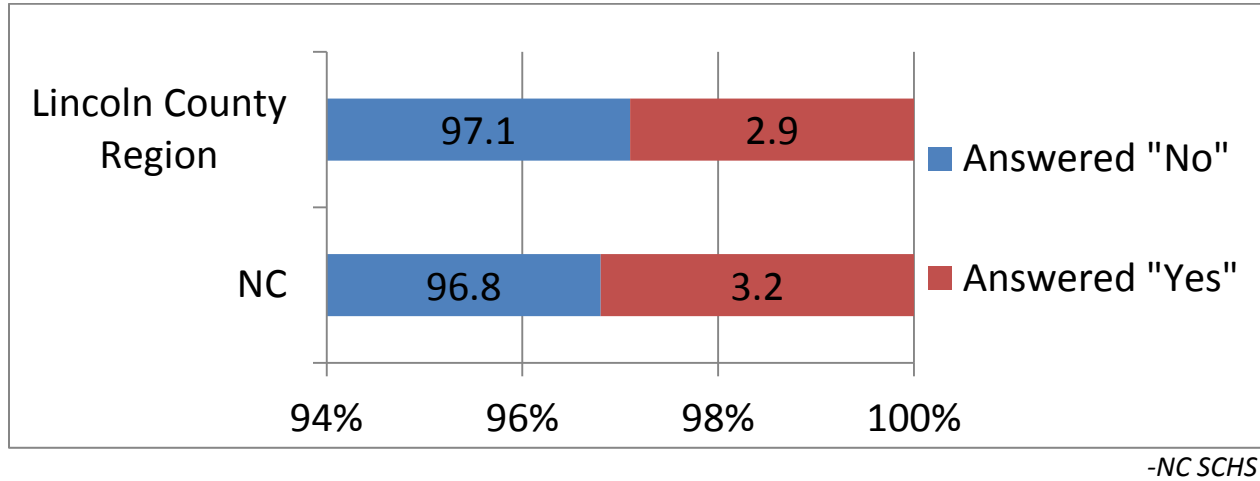
-NC SCHS

- Lincoln County had a **heart disease** mortality rate of 215.4 in 2011. This is higher than the North Carolina death rate of 175.6. Additionally, the disparities gap between Lincoln County and North Carolina has been trending closer together in recent years.
- When asked “Has a doctor, nurse or other health professional EVER told you that you had a **heart attack also called a myocardial infarction?**” And “Has a doctor, nurse or other health professional EVER told you that you had a **stroke?**”, Lincoln County Region residents and North Carolina residents responded “NO” 96% and 95.4% of the time, respectively. These results show that Lincoln County Region residents responded the same or slightly better when compared to North Carolina residents.

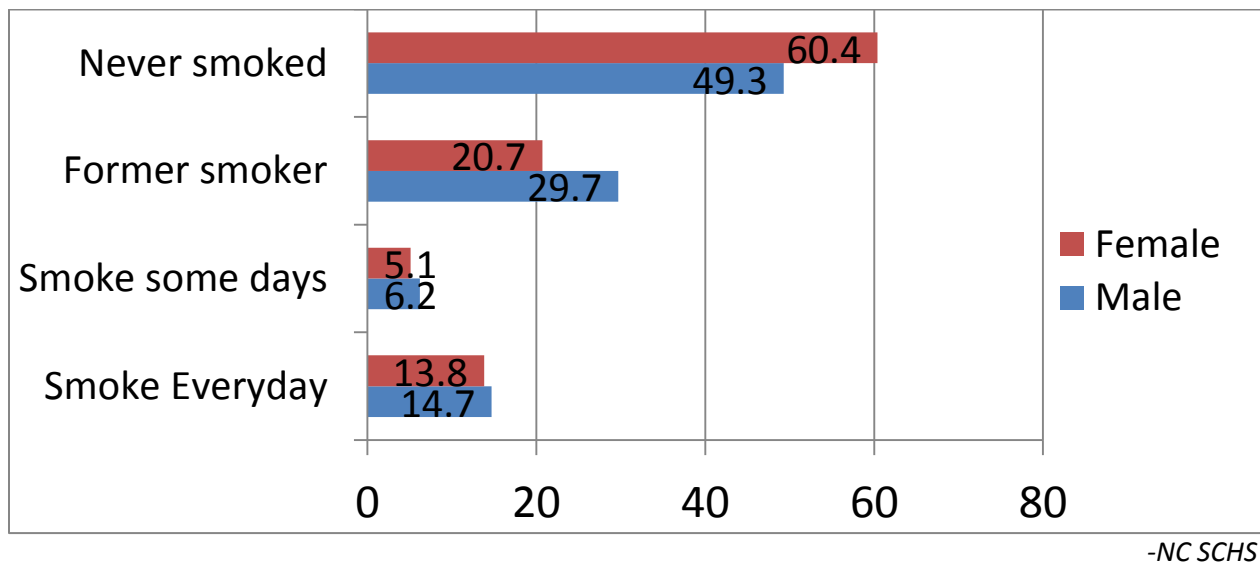
-NC SCHS, BRFSS 2012

- When asked “Has a doctor, nurse or other health professional EVER told you that you had a **stroke?**” Lincoln County Region residents responded the same or slightly better when compared to the state.

History of Stroke, BRFSS 2012



Lincoln County Region Smoking Status by Gender - Percentages, BRFSS 2012



- **Smoking** is a major risk factor for both heart disease and stroke. Almost one in five adults in the Lincoln County Region reported that they are current smokers.

Percentage of NC High School Students (9th – 12th grade) who have tried smoking (even one or two puffs), High School Youth Risk Behavior Survey

Year	Male	Female
2011	46.3	42.9
2009	46.3	46.1
2007	51.8	48.8
2005	55.9	52.7

-YRBS 2005-2011

- The percentage of high school aged students **who report that they have ever tried smoking** (even one or two puffs) has dropped by almost 10 percentage points for males and females between 2005 and 2011.0.

**Percentage of NC High School Students (9th - 12th grade) who have smoked cigarettes, cigars, cigarillos or little cigars; Or used chewing tobacco, snuff or dip on at least 1 day (during the 30 days before the survey),
High School Youth Risk Behavior Survey**

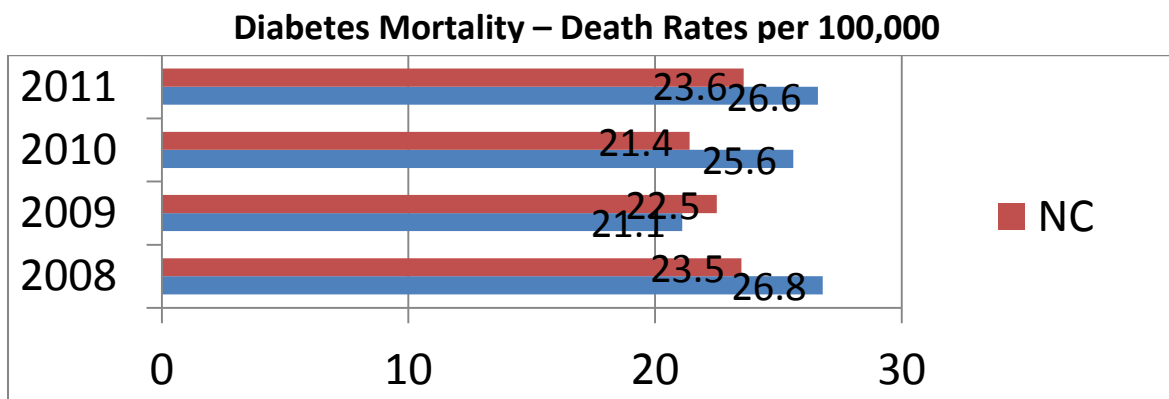
Year	Male	Female
2011	28.1	18.5
2009	29.8	21.8
2007	30.3	21
2005	31.7	25.1

-YRBS 2005-2011

- The percentage of high school aged students who have **tried tobacco products during the 30 days before the YRBS survey** (including tobacco products listed in the chart above) has been on the decline in the past 4 reported years. It is important to notice that male, high school aged students were more likely than female, high school aged students to report that they had used one of the above mentioned tobacco products during all reported years.

DIABETES

- Although Lincoln County is ranked 41 out of 100, in Clinical Care, according to the County Health Rankings Report that was published in 2013, our diabetic **screening percentage** rate of 91% is higher than the national benchmark of 90%.
- 11% of Lincoln County residents report having a **diabetic health outcome** compared to 10% in North Carolina.

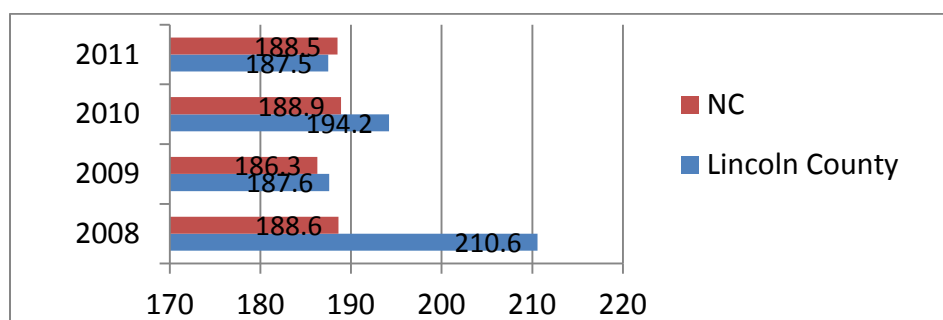


-NC SCHS

- The **diabetes mortality** rate has remained mostly constant in the 4 years reported, except when the Lincoln County rate (21.1) fell below the North Carolina rate (22.5) in 2009. North Carolina has remained constant for all four reported years. Lincoln County has remained 3-4 deaths per 100,000 above the rate for North Carolina for 2008, 2010 and 2011.
- When asked “Has a doctor, nurse or other health professional EVER told you that you have **diabetes?**” Lincoln County Region residents responded “YES” 9.9% of the time compared to the state at 10.4% of the time. Additionally, Lincoln County Region residents responded “No, borderline diabetes” 1.2% of the time compared to the state as 1.3%.

CANCER

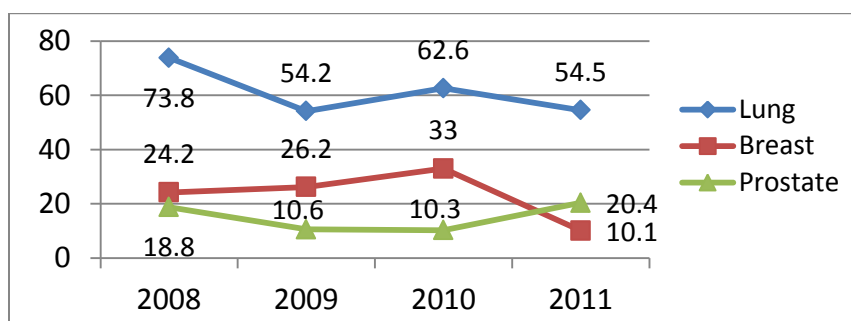
Cancer Mortality, All Sites – Death Rates per 100,000



-NC SCHS, 2011

- Lincoln County's **cancer rates (all sites)** has shown decreasing trend over the last four reported years, although we have had more reported cases than North Carolina every year except 2011. Lincoln County showed a spike in **cancer mortality** in 2008 which dropped the year after and has remained mostly constant, even though the data shows a slight rise in 2010.

Lincoln County Cancer Mortality, Selected Cancers – Death Rates per 100,000



-NC SCHS, 2011

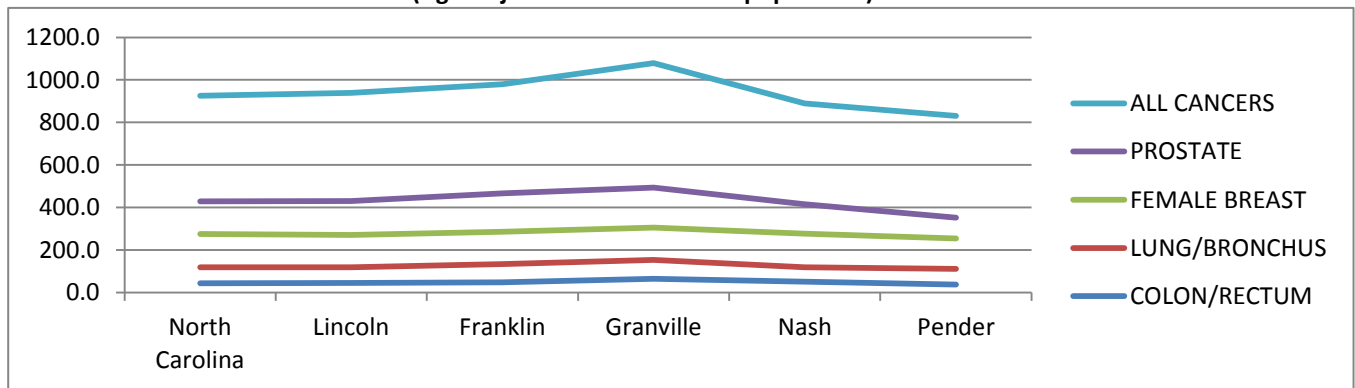
- Mortality rates for lung, breast and prostate cancers varies in Lincoln County. Lincoln County lung cancer rates have remained unsteady over the past four reported years when compared to North Carolina's rates which have remained between 57.1 and 58.
- Lincoln County breast cancer mortality showed a sharp decline in 2011 (10.1) when compared to the past 4 reported years and North Carolina's 2011 rate of 26.4.
- Lincoln County's prostate cancer mortality had fallen steadily and below North Carolina's rates between 2008 and 2010. Lincoln County's rate spiked back up in 2011 to 20.4 which is slightly higher than North Carolina's rate of 18.2.

All Sites Cancer Morbidity Data: 2006-2010 NC Cancer Incidence Rates per 100,000 Population
(Age-Adjusted to the 2000 US population)

County/State	COLON/RECTUM		LUNG/BRONCHUS		FEMALE BREAST		PROSTATE		ALL CANCERS	
	Cases	Rate	Cases	Rate	Cases	Rate	Cases	Rate	Cases	Rate
North Carolina	20,968	43.4	36,287	74.8	41,169	155.9	34,733	153.7	242,432	498.1
Lincoln	176	44.2	306	74.7	342	152.1	322	159.5	2,096	508.1
Franklin	141	47.9	250	84.7	253	152.8	245	180.9	1,541	512.6
Granville	187	63.3	261	89.4	241	152.9	260	187.9	1,746	584.8
Nash	274	50.0	386	68.9	466	157.2	355	138.5	2,593	473.9
Pender	111	36.4	238	73.7	234	143.7	154	97.5	1,487	478.8

-NC SCHS

All Sites Cancer Morbidity Data: 2006-2010 NC Cancer Incidence Rates per 100,000 Population
(Age-Adjusted to the 2000 US population)



Early Detection is the Best Prevention

-NC SCHS

➤ According to the 2012 BRFSS...

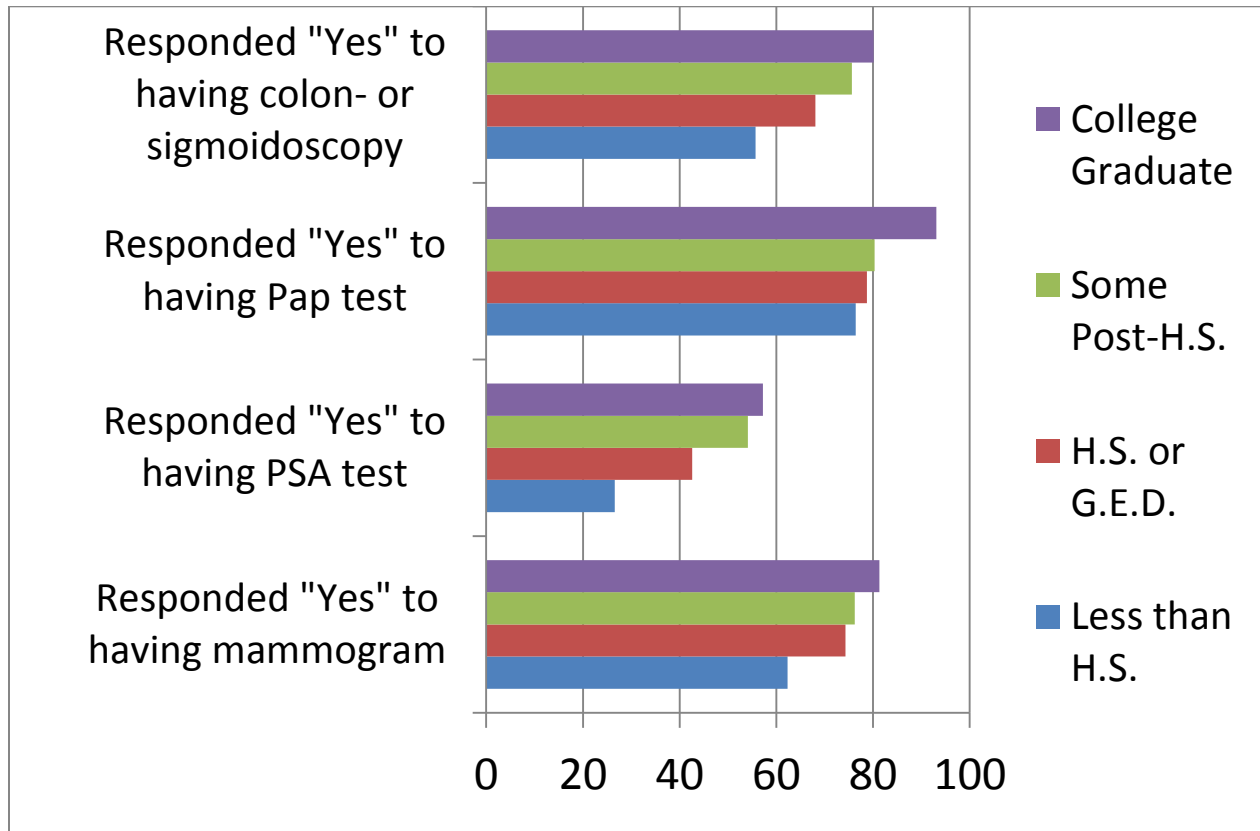
- 75.1% of women aged 40+ in the Lincoln County Region and North Carolina responded “Yes” when asked, “**Have - you had a mammogram within the past 2 years?**” Mammograms are key to detecting breast cancer early.

- 47% of men aged 40+ in the Lincoln County Region responded “Yes” when asked, “**Have you had a PSA test in the past 2 years?**” compared to 48.7% whom answered “Yes” in North Carolina. A PSA test is essential in detecting prostate cancer.

- 83.3% of women aged 18+ in the Lincoln County Region responded “Yes” when asked, “**Have you had a Pap test in the past 3 years?**” compared to 81.6% who answered “Yes” in North Carolina. A pap test is key in detecting HPV, a virus that causes cervical cancer.

- 71.1% of individuals aged 50+ in the Lincoln County Region responded “Yes” when asked, “**Have you ever had a colonoscopy or sigmoidoscopy?**” compared to 70.6% who answered “Yes” in North Carolina. These tests are important in detecting colon cancer.

**Lincoln County Region “Yes” Response Percentage Rates regarding
Cancer Screenings by Educational Attainment, BRFSS 2012**



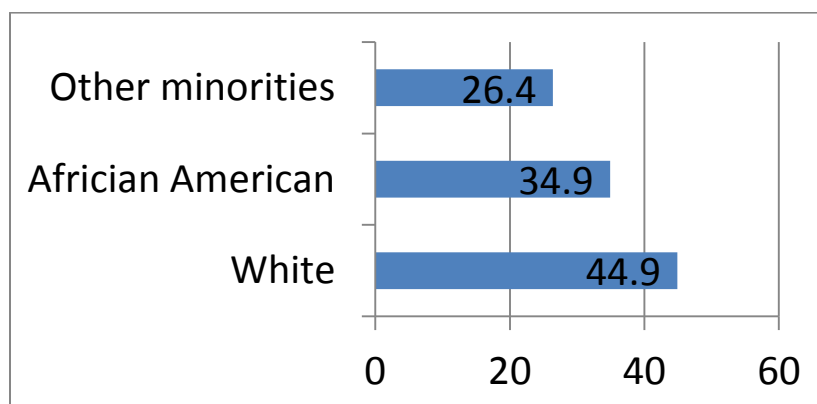
-NC SCHS

- In all cases above, higher educational attainment led to a higher percentage of “Yes” responses when asked about cancer screenings in the Lincoln County Region. The above graph shows an apparent health disparities gap.

OVERWEIGHT/OBESITY

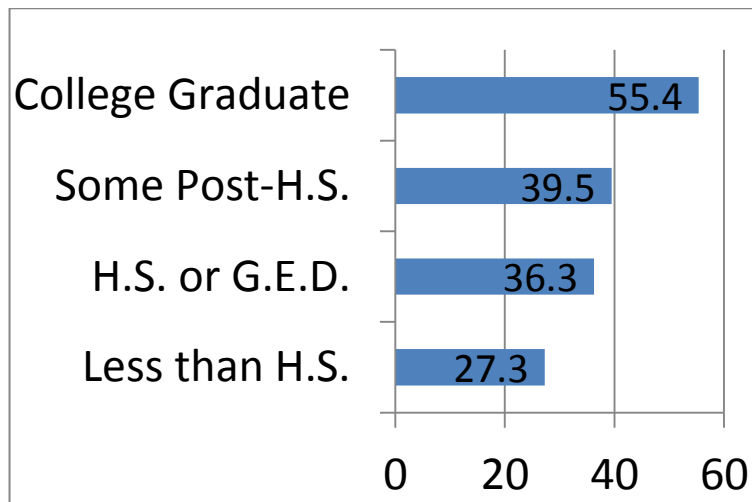
- **72.5% of adult males and 57.5% of adult females** in the Lincoln County Region reported that they have a body mass index (BMI) greater than 25.0 (**overweight or obese**). The Lincoln County Region is similar to North Carolina with percentages of 65% and 65.8% of respondents that they have a BMI greater than 25.0, respectively. Also, adults who classify themselves as **veterans or disabled are more likely to report having an overweight or obese BMI greater than 25.0.**
- According to the Child Health Assessment and Monitoring System Program (CHAMP), **32% of males and 29.1% of females aged 10-17** in the Lincoln County Region are reported as being overweight or obese. When genders are combined, 36% of children aged 10-13 and 25.3% of children aged 14-17 are reported as being overweight or obese.
- When asked “To what degree do you agree with the statement, *It is easy to purchase **healthy foods in my neighborhood** such as whole grain foods, low fat options, and fruits and vegetables*”, respondents in the Lincoln County Region answered “Strongly Agree” or “Agree” 87.1% of the time compared to 86.4% for North Carolina.

Lincoln County Region "Strongly Agreed" Response Percentage Rates when asked to consider the statement above by race, BRFSS 2012



-NC SCHS

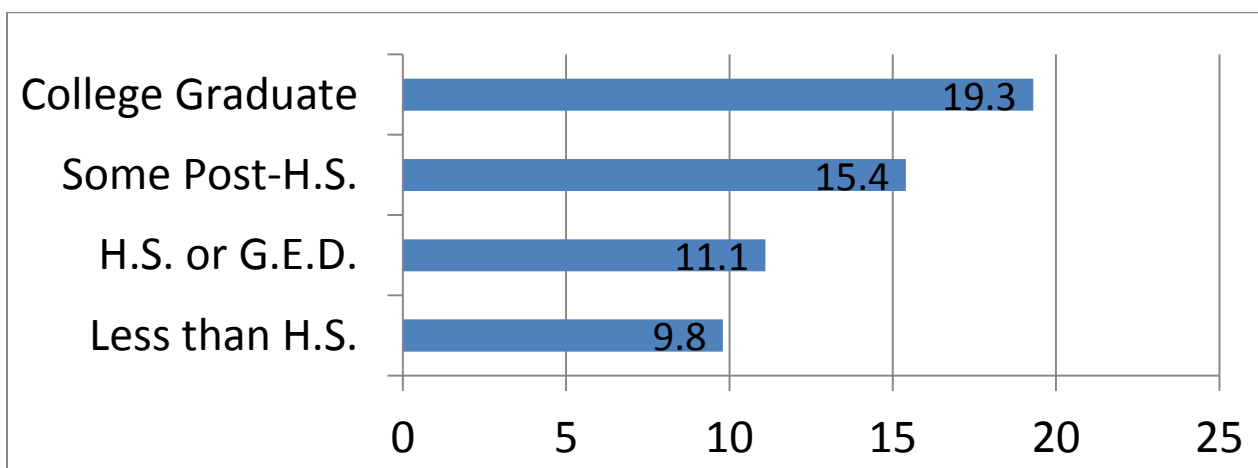
Lincoln County Region “Strongly Agreed” Response Percentage Rates when asked to consider the statement above by educational attainment, BRFSS 2012



-NC SCHS

- A **disparities gap** can be seen above when comparing “Strongly Agreed” response rates when asked “To what degree do you agree with the statement, *It is easy to purchase **healthy foods in my neighborhood** such as whole grain foods, low fat options, and fruits and vegetables*” when compared by race and educational attainment. This issue should be addressed.

Lincoln County Region "Yes" Response Percentage Rate when asked whether they consume 5 or more fruits, vegetables or beans per day by educational attainment, BRFSS 2012



-NC SCHS

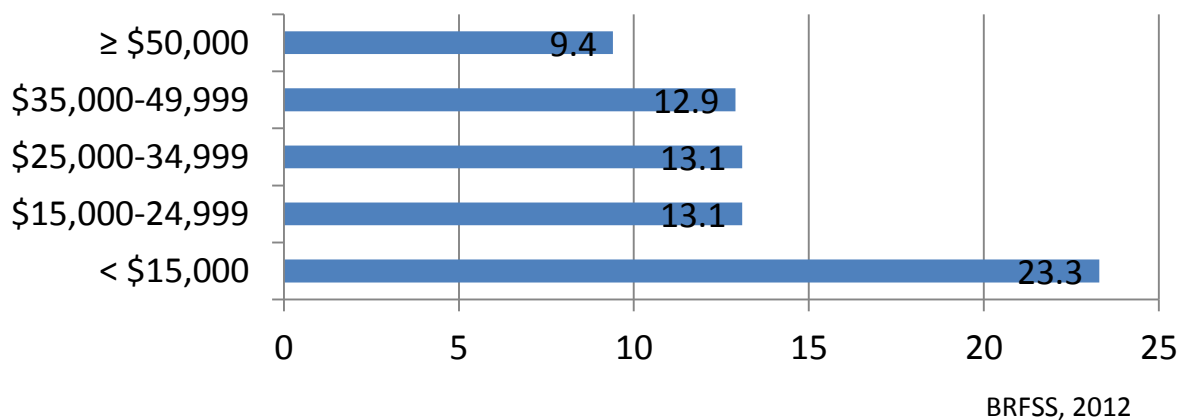
- When Lincoln County Region residents were asked “Do you **consume five or more servings of fruits or vegetables or beans** per day”, 14.5% of respondents answered “Yes” compared to 13.7% of respondents for the state as a whole. Additionally, 18.1% of women answered “Yes” while only 10.6% of men answered “Yes” to the above question, in the Lincoln County Region. A **disparities gap** can be seen when data is compared by educational attainment for the above question.
- 5% of Lincoln County residents reported having **limited access to healthy foods**, compared to 7% in NC. The national benchmark is 1%.
- Lincoln County reported that 56% of restaurants are considered **fast food restaurants**, compared to 49% in NC. The national benchmark is 27%.
- 1% of Lincoln County residents reported having **access to parks**, compared to 14% in NC. There is no reported benchmark.
- 24% of Lincoln County residents reported being **physically inactive**, compared to 25% in NC. The national benchmark is 21%.

-NC SCHS, County Health Rankings

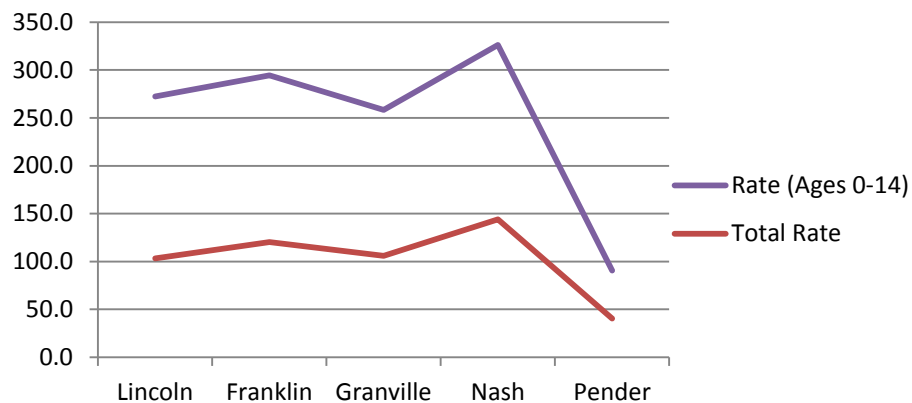
ASTHMA/LUNG HEALTH

- 13.3% of Lincoln County Region BRFSS respondents answered “Yes” when asked “Has a doctor, nurse, or other health professional **EVER told you that you had asthma?**”, compared to 13.2% of NC respondents. This is statistically similar.
- An apparent disparities gap is shown when comparing data, for the above questions, by household income.

Lincoln County Region "Yes" Response Percentage Rates when asked if respondents have EVER been told they had asthma by a health professional by household income, BRFSS 2012



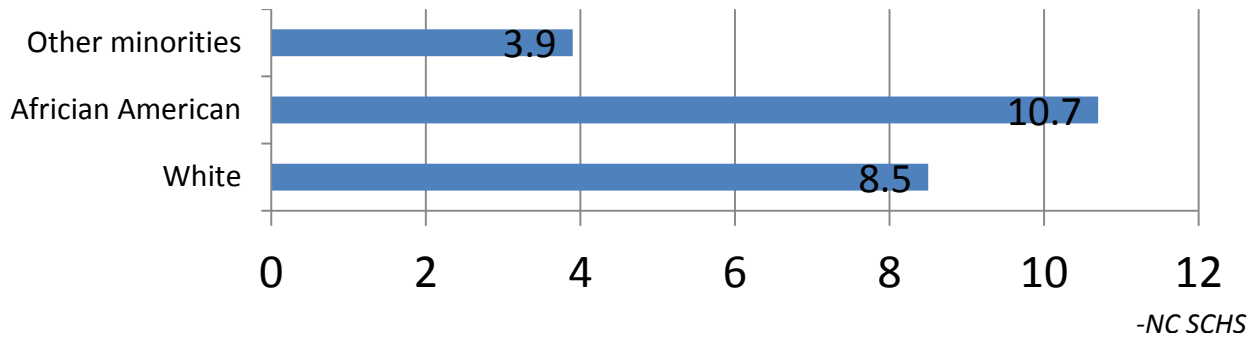
2012 NC Hospital Discharges (Primary Asthma Morbidity) Rates per 100,000



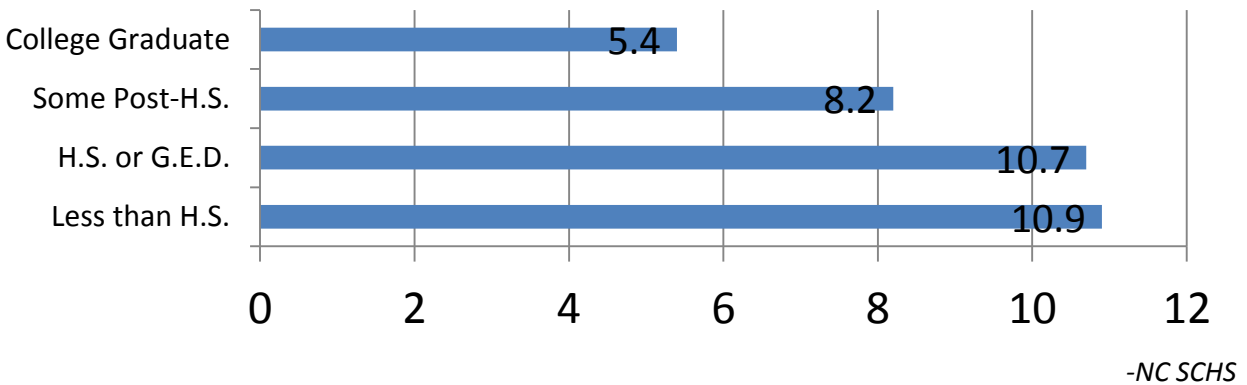
NC SCHS, County Health Data Book 2014

- When Lincoln County Region residents were asked “**Do you currently have asthma?**” the reported results were statistically similar to North Carolina’s reported results at
- 8.5% and 8.8%, respectively. An apparent **disparities gap** is shown when comparing data, for the above question, by race, educational attainment and household income.

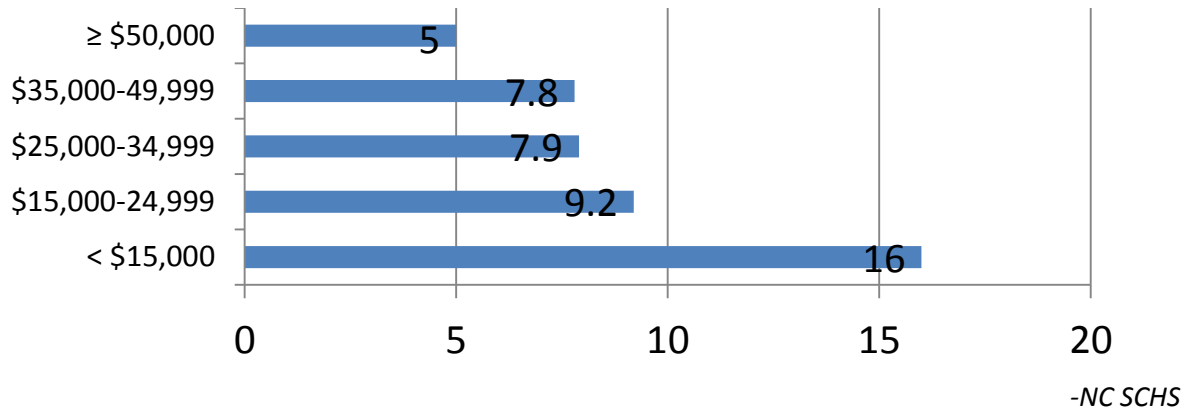
Lincoln County Region "Yes" Response Percentage Rates when asked if respondents currently have asthma by race, BRFSS 2012



Lincoln County Region "Yes" Response Percentage Rates when asked if respondents currently have asthma by educational attainment, BRFSS 2012

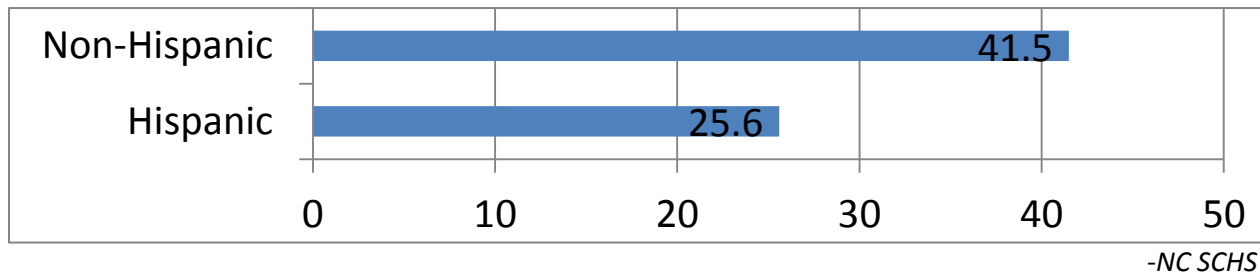


Lincoln County Region "Yes" Response Percentage Rates when asked if respondents currently have asthma by household income, BRFSS 2012

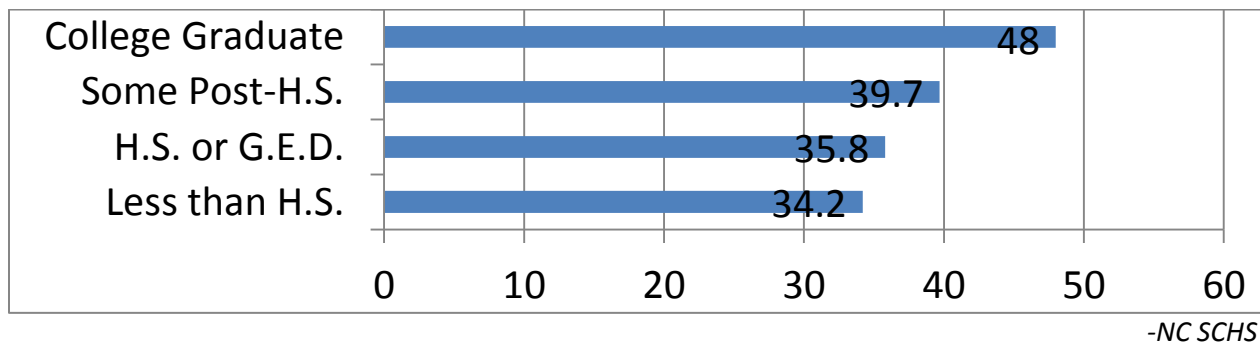


- For **Pneumonia and Influenza Mortality**, Lincoln County reported a rate of 19.9 deaths per 100,000 compared to 17.9 for North Carolina and 15.1 for the United States.
- When asked "During the past 12 months, have you **had either a seasonal flu shot or a seasonal flu vaccine** that was sprayed in your nose?" the reported results were statistically similar to North Carolina's reported results at 40.2% and 41.2%, respectively. There is an apparent **disparities gap** when comparing data, for the above question, by Hispanic/non-Hispanic, educational attainment and veteran status.

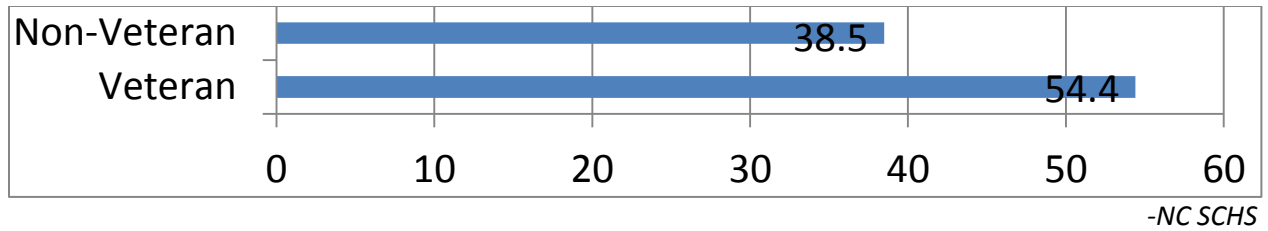
Lincoln County Region "Yes" Response Percentage Rates when asked if respondents have received a flu vaccine in the past 12 months by Hispanic/Non-Hispanic, BRFSS 2012



Lincoln County Region "Yes" Response Percentage Rates when asked if respondents have received a flu vaccine in the past 12 months by educational attainment, BRFSS 2012



Lincoln County Region "Yes" Response Percentage Rates when asked if respondents have received a flu vaccine in the past 12 months by veteran status, BRFSS 2012



**Lincoln County 2012 Morbidity Data: Inpatient Hospital Utilization and Charges by Principal Diagnosis
(Excluding Newborns & Discharges from Out-of-State Hospitals)**

DIAGNOSTIC CATEGORY	TOTAL CASES	DISCHARGE RATE (PER 1,000 POP)	AVERAGE DAYS STAY	DAYS STAY RATE (PER 1,000 POP)	TOTAL CHARGES	AVERAGE CHARGE PER DAY	AVERAGE CHARGE PER CASE
INFECTIOUS & PARASITIC DISEASES	544	6.9	6.2	42.3	\$22,497,172	\$6,702	\$41,355
-- Septicemia	416	5.2	6.7	35.0	\$19,450,554	\$7,007	\$46,756
-- AIDS	4	0.1	3.8	0.2	\$101,320	\$6,755	\$25,330
MALIGNANT NEOPLASMS	223	2.8	6.7	18.8	\$12,741,983	\$8,563	\$57,396
-- Colon, Rectum, Anus	24	0.3	8.4	2.5	\$1,649,753	\$8,167	\$68,740
-- Trachea, Bronchus, Lung	30	0.4	6.0	2.3	\$1,520,652	\$8,495	\$50,688
-- Female Breast	10	0.1	3.1	0.4	\$594,903	\$19,190	\$59,490
-- Prostate	17	0.2	1.5	0.3	\$699,848	\$27,994	\$41,168
BENIGN, UNCERTAIN & OTHER NEOPLASMS	46	0.6	4.9	2.8	\$2,526,060	\$11,177	\$54,914
ENDOCRINE, METABOLIC & NUTRIT. DISEASES	311	3.9	3.4	13.5	\$8,758,176	\$8,208	\$28,161
-- Diabetes	134	1.7	4.0	6.7	\$3,187,658	\$5,981	\$23,788
BLOOD & HEMOPOETIC TISSUE DISEASES	106	1.3	3.8	5.1	\$2,297,352	\$5,645	\$21,673
NERVOUS SYSTEM & SENSE ORGAN DISEASES	142	1.8	5.1	9.1	\$4,359,240	\$6,054	\$30,699
CARDIOVASCULAR & CIRCULATORY DISEASES	1,241	15.6	4.4	68.6	\$55,726,086	\$10,248	\$44,940
-- Heart Disease	862	10.9	4.4	47.5	\$40,828,582	\$10,827	\$47,420
-- Cerebrovascular Disease	225	2.8	4.4	12.5	\$7,640,850	\$7,687	\$33,959
RESPIRATORY DISEASES	827	10.4	5.5	57.5	\$25,597,950	\$5,616	\$30,953
-- Pneumonia/Influenza	217	2.7	4.7	12.9	\$5,969,631	\$5,853	\$27,510
-- Chronic Obstructive Pulmonary Disease (excl. Asthma)	153	1.9	4.0	7.7	\$3,407,623	\$5,568	\$22,272
-- Asthma	82	1.0	3.3	3.4	\$1,321,682	\$4,877	\$16,118
DIGESTIVE SYSTEM DISEASES	657	8.3	4.7	38.6	\$20,881,485	\$6,817	\$31,783
-- Chronic Liver Disease/Cirrhosis	15	0.2	4.5	0.8	\$355,432	\$5,305	\$23,695
GENITOURINARY DISEASES	429	5.4	3.6	19.5	\$10,137,063	\$6,540	\$23,630
-- Nephritis, Nephrosis, Nephrotic Synd.	177	2.2	4.4	9.8	\$3,956,610	\$5,099	\$22,354
PREGNANCY & CHILDBIRTH	746	9.4	2.5	23.6	\$10,648,688	\$5,682	\$14,274
SKIN & SUBCUTANEOUS TISSUE DISEASES	196	2.5	4.1	10.0	\$3,809,347	\$4,780	\$19,435
MUSCULOSKELETAL SYSTEM DISEASES	550	6.9	3.1	21.2	\$32,831,947	\$19,485	\$59,694
-- Arthropathies and Related Disorders	313	3.9	2.8	11.2	\$17,369,835	\$19,473	\$55,495
CONGENITAL MALFORMATIONS	21	0.3	6.2	1.7	\$1,088,561	\$8,310	\$51,836
PERINATAL COMPLICATIONS	34	0.4	14.4	6.2	\$1,554,103	\$3,172	\$45,709
SYMPTOMS, SIGNS & ILL-DEFINED CONDITIONS	235	3.0	2.7	8.0	\$4,546,623	\$7,205	\$19,347
INJURIES & POISONING	656	8.3	4.9	40.2	\$30,977,510	\$9,705	\$47,222
OTHER DIAGNOSES (INCL. MENTAL DISORDERS)	623	7.9	8.3	65.6	\$14,717,057	\$2,830	\$23,623
ALL CONDITIONS	7,587	95.7	4.7	452.3	\$265,696,401	\$7,406	\$35,029

- NC SCHS, County Health Data Book 2014

**Lincoln County 2008-2012 Mortality Data: Ten Leading Causes of Death by Age Group
(Ranking, Number of Deaths, and Unadjusted Death Rates per 100,000 Population)**

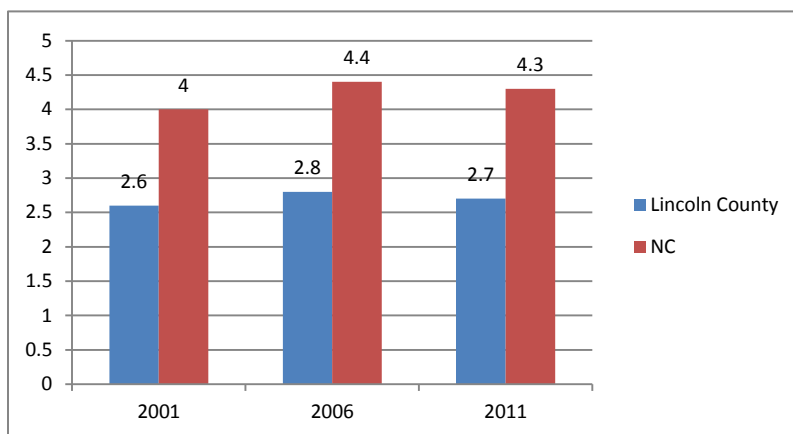
			# OF DEATHS	DEATH RATE
AGE GROUP:	RANK	CAUSE OF DEATH:		
TOTAL - ALL AGES	0	TOTAL DEATHS --- ALL CAUSES	3,457	886.1
	1	Diseases of the heart	863	221.2
	2	Cancer - All Sites	748	191.7
	3	Chronic lower respiratory diseases	262	67.2
	4	Cerebrovascular disease	181	46.4
	5	Other Unintentional injuries	128	32.8
	6	Diabetes mellitus	100	25.6
	7	Alzheimer's disease	87	22.3
	8	Nephritis, nephrotic syndrome, & nephrosis	81	20.8
	9	Pneumonia & influenza	73	18.7
	10	Motor vehicle injuries	62	15.9
00-19 YEARS	0	TOTAL DEATHS --- ALL CAUSES	64	63.6
	1	Conditions originating in the perinatal period	18	17.9
	2	Motor vehicle injuries	10	9.9
	3	Congenital anomalies (birth defects)	7	7.0
	4	Cancer - All Sites	3	3.0
		Other Unintentional injuries	3	3.0
		SIDS	3	3.0
	7	Diseases of the heart	2	2.0
		Chronic lower respiratory diseases	2	2.0
	9	Cerebrovascular disease	1	1.0
		Pneumonia & influenza	1	1.0
		Acute bronchitis & bronchiolitis	1	1.0
20-39 YEARS	0	TOTAL DEATHS --- ALL CAUSES	110	121.5
	1	Other Unintentional injuries	28	30.9
	2	Motor vehicle injuries	18	19.9
	3	Diseases of the heart	12	13.3
		Suicide	12	13.3
	5	Cancer - All Sites	8	8.8
	6	Homicide	7	7.7
	7	In-situ/benign neoplasms	2	2.2
		Congenital anomalies (birth defects)	2	2.2
	9	Anemias	1	1.1
		Diabetes mellitus	1	1.1
		Cerebrovascular disease	1	1.1
		Aortic aneurism and dissection	1	1.1
		Acute bronchitis & bronchiolitis	1	1.1
		Chronic lower respiratory diseases	1	1.1
		Cholelithiasis & other disorders of the gallbladder	1	1.1

			# OF DEATHS	DEATH RATE
40-64 YEARS	0	TOTAL DEATHS --- ALL CAUSES	854	582.6
	1	Cancer - All Sites	255	173.9
	2	Diseases of the heart	179	122.1
	3	Other Unintentional injuries	53	36.2
	4	Chronic lower respiratory diseases	46	31.4
	5	Diabetes mellitus	32	21.8
	6	Suicide	31	21.1
	7	Cerebrovascular disease	28	19.1
		Motor vehicle injuries	28	19.1
	9	Chronic liver disease & cirrhosis	25	17.1
	10	Nephritis, nephrotic syndrome, & nephrosis	16	10.9
65-84 YEARS	0	TOTAL DEATHS --- ALL CAUSES	1,628	3421.5
	1	Diseases of the heart	414	870.1
	2	Cancer - All Sites	401	842.8
	3	Chronic lower respiratory diseases	172	361.5
	4	Cerebrovascular disease	92	193.4
	5	Diabetes mellitus	49	103.0
	6	Nephritis, nephrotic syndrome, & nephrosis	41	86.2
	7	Septicemia	38	79.9
	8	Pneumonia & influenza	37	77.8
	9	Alzheimer's disease	33	69.4
	10	Other Unintentional injuries	25	52.5
85+ YEARS	0	TOTAL DEATHS --- ALL CAUSES	801	16845.4
	1	Diseases of the heart	256	5383.8
	2	Cancer - All Sites	81	1703.5
	3	Cerebrovascular disease	59	1240.8
	4	Alzheimer's disease	52	1093.6
	5	Chronic lower respiratory diseases	41	862.3
	6	Nephritis, nephrotic syndrome, & nephrosis	24	504.7
	7	Pneumonia & influenza	21	441.6
	8	Other Unintentional injuries	19	399.6
	9	Diabetes mellitus	18	378.5
	10	Hypertension	14	294.4

- NC SCHS, County Health Data Book 2014

Oral Health

Dental Providers per Resident



Trend Data: Rates per 10,000 residents

-NC SCHS

- Lincoln County is well below the state rate for dentists per 10,000 residents. Over the past 10 years we have not increased the number of dentists per residents to meet the needs of our community. We are still in need of more dentists. According to the Community Health Survey, almost 40% of respondents reported they did not have dental insurance. This continues to be a problem for adults seeking dental care who cannot afford the proper preventative care or treatment.

Immunizations

- Immunizations are key to public health. Beginning in December of 2009, children insured by private insurance had to pay for the cost of 11 necessary childhood vaccines, thus making the clients visit their primary care provider to receive the vaccine. From December 2008-2009, the Lincoln County Health Department provided 4,219 vaccines to local residents. From October 2012-October 2013, we provided 2,358 vaccines. This decrease is due to the availability of flu vaccine at other venues and the added cost for private paying patients.

-Lincoln County Health Department FY 2012-2013 Year End Report

Environmental Health

	FY 10-11	FY 11-12	FY 12-13	FY 13-14 (Through November 2013)
F & L Permits	30	28	39	7
On-Site Finals	153	162	168	74
Water Samples	162	282	302	135
New Well Permits	107	85	98	24

“The increase in all services for FY 2012-2013 is related to the upturn of the economy.”

-Scott Sneed, Environmental Health Manager

Lincoln County Environmental Health Complaint Log, 2012-2013		
Type	2012	2013
Food and Lodging	19	44
Mosquito	16	2
Septic	41	38
Other*	7	5

Other* - Unclassified Complaints such as dead animals, standing water that doesn't relate to mosquitos, and complaints referred to another agency.

-Lincoln County Department of Environmental Health Services, 2012-2013

Childhood Blood Lead Incidence, 2009

County Name	# of Children Tested	Percent of Children Tested	Total # of Confirmed Cases	Percent of Children With Elevated Blood Lead Levels	Census 2000 Data			Estimated Population of Children < 6, 2009
					Total Housing Units	Pre-1950 Housing Units	% of Children < 6 Under Poverty	
Lincoln	733	12.4%	1	0.14%	25,717	3,188	11.0%	5,926
Franklin	947	19.9%		0.00%	20,364	2,713	18.0%	4,767
Granville	772	19.0%	2	0.26%	17,896	2,589	17.0%	4,055
Nash	2,339	30.4%	7	0.30%	37,051	5,371	17.0%	7,697
Pender	1,043	28.5%	1	0.10%	20,798	1,549	24.0%	3,660

CBLS County-level Summary Data for NC, 2009

Childhood Blood Lead Incidence, 2008

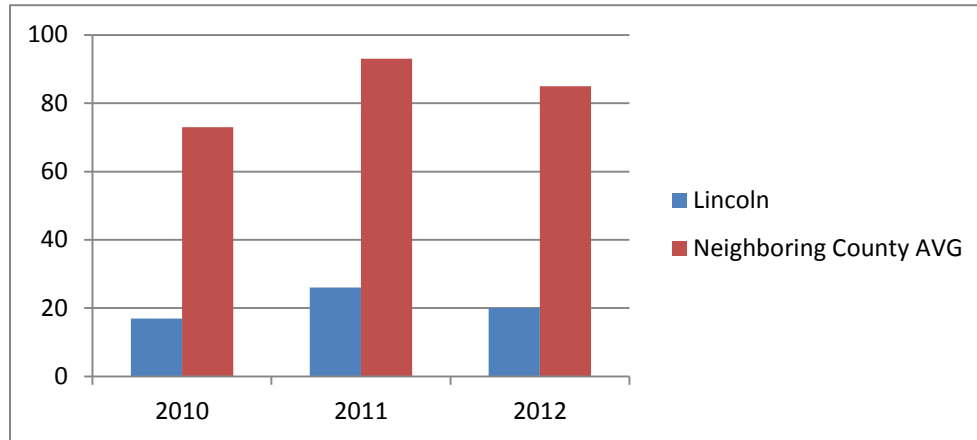
County Name	# of Children Tested	Screening Rate (# tested / population)	Total # of Confirmed Cases	Percent of Children With Elevated Blood Lead Levels	Census 2000 Data			Estimated Population of Children < 6, 2008
					Total Housing Units	Pre-1950 Housing Units	% of Children < 6 Under Poverty	
Lincoln	786	13.5%	3	0.38%	25,717	3,188	11.0%	5,821
Franklin	950	20.3%	1	0.11%	20,364	2,713	18.0%	4,685
Granville	754	18.4%	3	0.40%	17,896	2,589	17.0%	4,101
Nash	2,179	29.0%	14	0.64%	37,051	5,371	17.0%	7,513
Pender	1,010	27.9%	2	0.20%	20,798	1,549	24.0%	3,615

CBLS County-level Summary Data for NC, 2008

*Please note – Data after 2009 is not available regarding childhood blood lead levels on the NC Department of Environmental and Natural Resources Childhood Blood Lead Surveillance site.

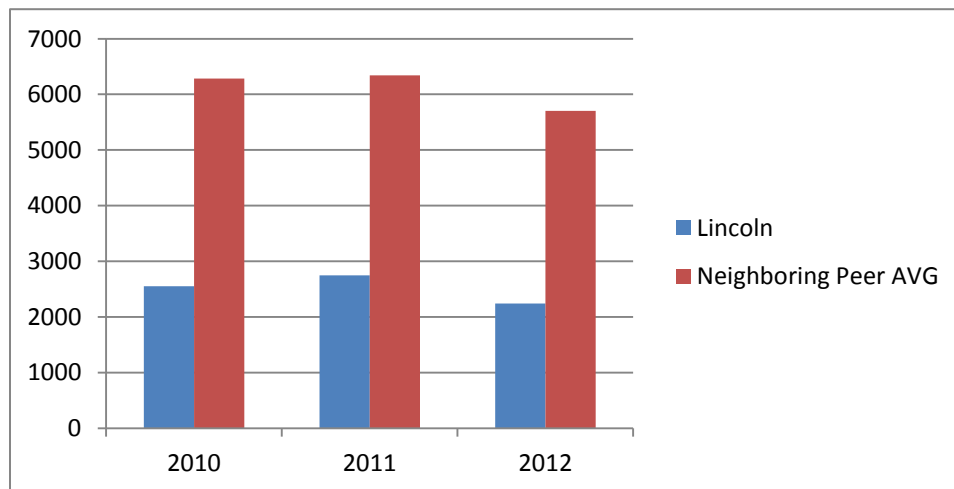
Mental Health

Persons Served in Area Mental Health Programs



-Department of Health and Human Services

Persons Served in Alcohol and Drug Centers



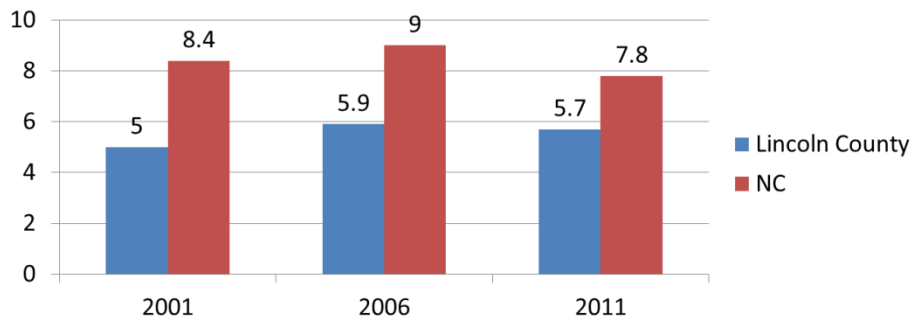
-Department of Health and Human Services

- Neighboring residents have higher populations and we are working on increasing services that can be rendered in Lincoln

➤ While mental health continues to be an issue for the nation, Lincoln County has seen a decrease in persons in mental health programs much like our neighboring counties have. Since the merger of mental health programs across the region to form Partners, it appears that persons seeking mental health services are receiving the help they need.

Access to Care

Access to Care: Health Care Providers Primary Care Physicians



Trend Data: Rates per 10,000 residents

NC SCHS

- The number of physicians per resident continues to be an issue for Lincoln County. We hope to see an increase in physicians due to the upturn of the economy and rise in economic development.

Executive Summary

Chronic Diseases have a long course of illness and affect the quality of life for many Americans. Although chronic diseases are among the most common and costly health problems, they are also among the most preventable by adopting healthy behaviors. It is important to note that Lincoln County has a rapidly growing minority population. This population is at greater risk of developing many chronic diseases for a variety of reasons including genetics, access to health care, likelihood of receiving screenings for early disease detection, access to healthy food options, lower incomes, and misunderstanding and mistrust of health care providers due to low health literacy and lower education attainment. These reasons point to a disparities gap between populations based on ethnicity, gender, age and many other factors discussed throughout the Community Health Assessment document. Our aging population will also increase our chronic disease rates, as chronic diseases effect older people at a higher rate than younger people. One exception to this is asthma, which affects children more than adults. Heart Disease, Cancer (all sites combined), and chronic lower respiratory disease are Lincoln County's top 3 Leading Causes of Death for all ages. The Health Department offers several clinics for those affected by chronic disease. The Lincoln County Partnership for Health, Lincoln County Health Department, and the North Carolina Cooperative Extension Service have several health education programs to help prevent chronic disease before they start by encouraging healthy behaviors. Lincoln County Government has established a Wellness Committee to impact the health of employees working for the county. Additionally, Lincoln County Schools have a mandatory wellness policy at each school, are a 100% smoke free system, and continue to support a School Health Advisory Council (SHAC) to help improve the health of students. The Lincoln County Health Department's dental hygienist, health educator and disaster preparedness coordinator work closely with SHAC.

Statistical Resources

- NC SCHS- North Carolina State Center for Health Statistics: <http://www.schs.state.nc.us/>
- BRFSS- Behavioral Risk Factor Surveillance System: <http://www.cdc.gov/brfss/>
- Lincoln Economic Development Association: <http://www.lincolneda.org/>
- NC Tobacco Prevention and Control Branch:
<http://www.tobaccopreventionandcontrol.ncdhhs.gov/>
- American Diabetes Association: <http://www.diabetes.org/>
- Community Health Rankings: <http://www.countyhealthrankings.org/>
- Hospice and Palliative Care of Charlotte: add website

Overview

Local Hospitals and Clinics

Carolinas Medical Center-Lincoln (CMC-Lincoln)

Carolinas Medical Center-Lincoln (CMC-Lincoln) is a new 101 bed hospital and medical office building in Lincolnton, N.C. The contemporary facility provides comprehensive cardiac care services, trauma care and a wide range of services including imaging, rehabilitation, and pain management. New Beginnings, a spacious birthing center, has a Level 2 nursery and pediatric hospitalist on staff to care for infants. CMC-Lincoln also offers numerous infant care classes, diabetes education, and nutritional classes.

Medical Unit	Home Health	Lincoln Med Center Optima Therapies
Surgical Unit	Optima Therapy Services	Lincoln Medical Center Imaging
Critical Care and Intensive care Units	Chiropractic Care	Lincoln Urology
Emergency Department	Sleep Center	Lincoln Center for Women's Health
New Beginnings Maternity Center	Heart Center	Orthopedic Specialists of Lincoln County
Outpatient Diabetes Services	Lakeshore pediatrics	Carolina's Internal Medicine Associates

-CMC-Lincoln

Hospice of Lincoln County

Hospice of Lincoln County began serving patients in Lincolnton in 1987 and, ten years later, merged with Hospice & Palliative Care Charlotte Region to form Hospice & Palliative Care Lincoln County (HPCLC). Working from a home base in Lincolnton, HPCLC serves patients primarily in Lincoln, Catawba, and Gaston counties. Throughout its history, Hospice & Palliative Care Lincoln County has tried to increase public awareness of hospice and maintain quality care for its patients.

-Hospice and Palliative Care of Charlotte

Lincoln County Health Department

Mission Statement

The Lincoln County Health Department provides quality health services to promote a healthy community.

Vision Statement

Lincoln County Health Department services will promote healthy lifestyles through prevention, preparedness and education.

General Information

The Health Department offers the following services to all county citizens, including those with Medicare and Medicaid:

Child Health	Child and Adult Immunizations	Communicable Disease
Tuberculosis Control	STD and HIV/AIDS Testing	Chronic Disease Treatment
Breast and Cervical Cancer Control	General Clinic	Women's Health Clinic
Maternal Health	WIC	Care Coordination for Children
Laboratory	Adult Health	Child Care Health Consultant
Refugee and Migrant Health	Home Health Services	Environmental Health.

Lincoln County Home Health

Home Health provides Home Health Services to residents of Lincoln County who are essentially homebound and are in need of skilled care in the home.

Lincoln County Environmental Health

Environmental Health provides inspections of day cares, restaurants, motels, pools, septic system inspections; and well water sampling and mosquito control.

-Lincoln County Health Department

Helping Hands Clinic

Gaston Family Health Services (GFHS) was formed in 1991 to provide family healthcare to anyone in need, regardless of ability to pay.

In 2012, a psychiatric nurse practitioner was added to the staff to both treat individual patients and to expand the reach of these services by supporting the Gaston- and Lincoln-based primary care providers as they meet both the physical and mental health needs of their patients using an evidence-based integrated care model.

Building on successes in Gaston County, GFHS has initiated projects under the same model in Iredell County with the 2007 opening of both medical and dental sites; in Lincoln County with opening of a medical site in 2010.

-Hospice and Palliative Care of Charlotte

Recreation

Lincoln County Parks and Recreation

Parks Betty G. Ross Park 800 Madison Street, Lincolnton, NC 28092 Phone: 704-735-2671	East Lincoln Park 8160 Optimist Club Road, Denver, NC 28037	McBee Street Park East McBee Street, Lincolnton, NC 28092	Vale Recreation Park 4875 Reepsville Road, Vale, NC 28168
Highland Drive Park Highland Drive, Lincolnton, NC 28092	Beatty's Ford Park 8335 Shipley Lane, Denver, NC 28037	West Lincoln Park 369 Hulls Grove Church Road, Vale, NC 28168	

Matching Grant Received for New Park

Lincoln County has received a matching grant from the North Carolina Parks and Recreation Trust Fund in the amount of \$352,432. These grant funds, along with funds from the Denver Lake Norman Rotary Club Foundation, will be used to begin the construction of athletic fields, walking trails, disc golf and playground in the long-awaited park to be located on Galway Lane in Denver.

-Lincoln County Parks and Recreation

Marcia H. Cloninger “Rail-Trail”

The one-mile Marcia H. Cloninger Rail-Trail, known locally as the Lincolnnton Rail-Trail, offers a chance to experience the City of Lincolnnton by foot. This trail is highlighted by a stately courthouse, an active Main Street and much more. Currently one-half mile of the rail trail is currently completed. Part of the former Norfolk Southern Railroad corridor, from the old rail- road depot at Pine and North Poplar streets, two blocks north of Main street, the trail meanders through town, briefly sharing its corridor with an active railroad line.

Lake Norman

Recognizing that Lake Norman is an invaluable recreational asset, Duke Power makes every effort to keep it an attractive place to live and play. Duke Power partnered with the state in the establishment of the Duke Power State Park. In addition, Duke has built two bank fishing areas and eight public boating access areas along the shoreline. The public can also enjoy free tours and exhibits offered by the Energy Explorium, Duke’s energy information and education center located near McGuire Nuclear Station. Many of the Duke Power public access areas operate in partnership with the North Carolina Wildlife Resources Commission, the South Carolina Department of Natural Resources and various recreation and law enforcement agencies.

Sailing	Golfing	Water Skiing
Jet Skiing	Swimming	Sculling
Boating		

-Leda Fact Book 2013

Lincoln County Health Department Guide to Services

CLINICAL SERVICES	
Adult Health	The Adult Health program provides comprehensive health exams, related laboratory testing, education, and referrals for both men and women over the age of eighteen who reside in Lincoln County.
Breast and Cervical Cancer Control (BCCP)	BCCCP provides breast and cervical cancer screenings for uninsured/underinsured women ages 50-64; clinical breast exams, mammograms, pap smears, and referrals as needed.
Child Health	Through this clinic, children/adolescents 21 years of age and younger who live in Lincoln County may receive well child preventive health exams, related laboratory testing, client-centered education, appropriate vaccinations, and referrals as needed.
Care Coordination for Children (CC4C)	This program provides care management for children birth to 5 years of age, assisting with interventions to maximum health outcomes.
Chronic Disease Treatment	The Chronic Disease Management program provides treatment, education, referral and follow-up to clients with chronic diseases such as diabetes, hypertension, or high cholesterol.
Communicable Disease	<p>The objectives of this program are to promptly investigate disease outbreaks and to implement control measures to minimize disease transmission; and to keep the community and media informed of public health interventions in order to enhance disease control efforts. The program also includes the following services:</p> <ul style="list-style-type: none"> • Sexually Transmitted Disease and HIV/AIDS Testing: Provides confidential examinations, diagnostic testing and treatment of STDs, as well as HIV counseling and testing. • Tuberculosis Control: Provides management and treatment of persons with active, suspected, or latent TB infection.
General Clinic	Provides pregnancy tests, adult immunizations, TB testing, and certain blood tests with a physician's order.
Immunizations	Immunizations are provided for adults, including Hepatitis A and B, Td/Tdap, measles, mumps, rubella, flu, and pneumonia. TB skin testing is also provided, as well as state required vaccines to all children birth through age eighteen who qualify.
Maternal Health	In order to promote healthy pregnancies and babies, this program provides comprehensive, routine prenatal care and education to pregnant women who live in Lincoln County. Patients are referred for other services as appropriate which may include WIC, PCM, Post-Partum/Newborn home visiting, etc. Patients will deliver at CMC-Lincoln.
Pregnancy Care Management (PCM)	Through this care management program, Medicaid eligible women are assisted in obtaining local resources to meet their needs during pregnancy and immediately following delivery.

CLINICAL SERVICES: Continued	
Migrant/Refugee Health	This program ensures the availability of essential health care services to migrant farm workers, their families, and any documented refugees who live in Lincoln County.
Women's Health	In order to promote wellness, planned pregnancies, and prevention of disease, the Family Planning clinic offers complete physical examinations including pap smears, breast exams, screening for STDs, limited laboratory testing, and various birth control methods.
OTHER SERVICES	
Interpreter Services	Interpreter services are provided for hearing impaired and Spanish speaking clients.
Community Health	The community health division provides education and programming to improve the health of the community. Focus areas include: fitness and nutrition, tobacco cessation, and emergency preparedness. If you are interested in a health education program, please call (704) 736-2023.
Community Transformation Grant Program Coordinator	The Community Transformation Grant Program Coordinator works to increase access to healthy food options, promote physical activity, and improve tobacco free policies. This grant is funded by the CDC until September 2016.
Child Care Health Consultant	The Child Care Health Consultant provides health, safety, and nutrition consultation and trainings to child care staff, children, and parents to increase the quality of care in child care centers and family child care homes in Lincoln County. This is a grant funded by the Partnership for Children of Lincoln & Gaston counties.
Laboratory	Laboratory testing for the various health department clinics, health fairs, and outreach programs are provided, as well as assisting patients with routine laboratory orders from their private physician.
School Health	School nurses work within Lincoln County Schools providing a variety of services including, but not limited to: health assessments and preventive screenings, educational information and/or presentations to students and staff; provision of individualized health care and emergency action plans; assessment of immunization compliance and school safety; and referrals and follow-up as necessary.
Susan G. Komen Grant Program Coordinator	The Susan G. Komen Grant Program Coordinator works to educate on the importance of breast health and increases access to breast exam services. Works in conjunction with the BCCCP/Adult Health Coordinator.
Vital Records	The Health Department's registrar files registration of all Lincoln County births and deaths, and ensures that the information is complete and accurate. Please call the Lincoln County Register of Deeds at (704) 736-8530 for a certified copy of a birth or death certificate.

OTHER SERVICES: Continued

Women, Infants, and Children Program (WIC)

WIC is a supplemental nutrition program that serves pregnant, breastfeeding, or postpartum women, infants, and children to age five. WIC provides nutrition education, nutritious supplemental foods, breastfeeding information and education, and referrals for other health care services. WIC also offers breastfeeding resources and support and has an International Board Certified Lactation Consultant (IBCLC) and a Breastfeeding Peer Counselor on staff.

WIC HOURS:

Monday, Wednesday, Friday: 8:00 AM - 5:00 PM

Tuesday, Thursday: 8:00 AM - 8:00 PM

WIC Telephone:

(704) 736-8639 or (704) 736-8640

HOME HEALTH SERVICES

Nursing assessments

Catheter care and instructions

Blood pressure check

Enteral nutrition

Ostomy care

skin and wound care

Diabetic care and instruction

Injections

Irrigations

Enemas

Blood/urine collection for lab

Bed and tub bath

Personal Care

Patient education

Family education

Physical therapy

Speech therapy

Occupational therapy

Oxygen therapy

Medical supplies

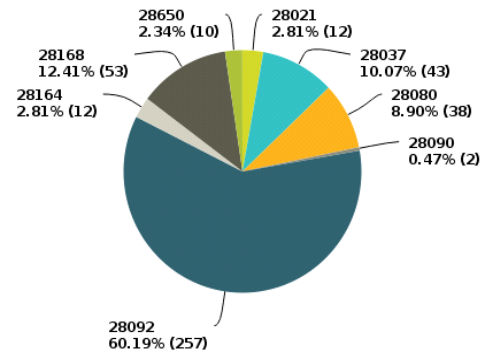
Many other related services

2013 Community Health Assessment Survey

427 Lincoln County Residents

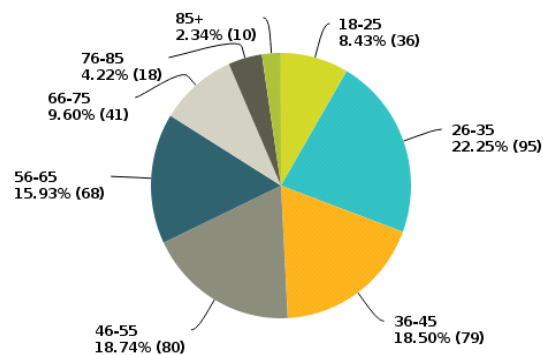
Q1 What is your zip code?

Answered: 427 Skipped: 0



Q2 What age group are you in?

Answered: 427 Skipped: 0

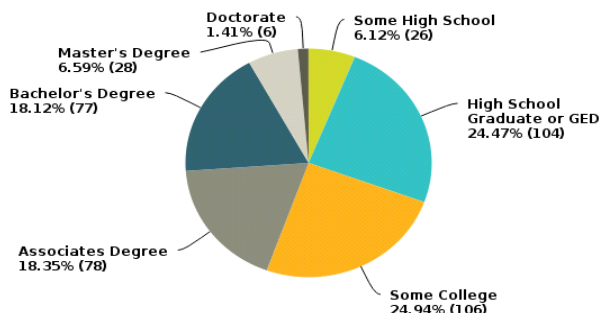


Q3: What is your Gender?

87.93% (374) Female and 12.07% (53) Male

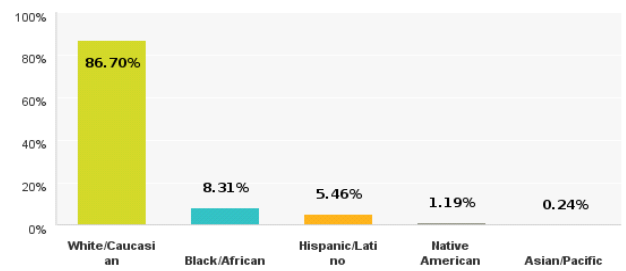
Q4 What is the highest grade you completed?

Answered: 425 Skipped: 2



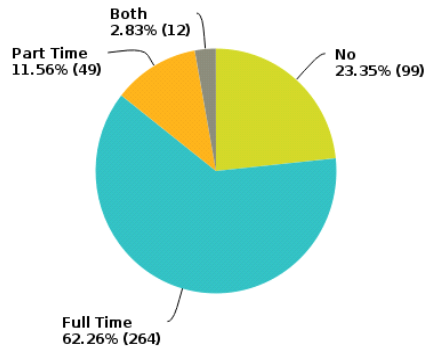
Q5 What is your race/ethnicity? (Check all that apply)

Answered: 421 Skipped: 6



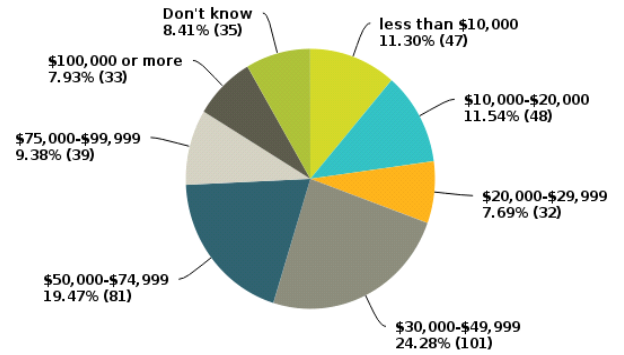
Q6 Are you employed?

Answered: 424 Skipped: 3



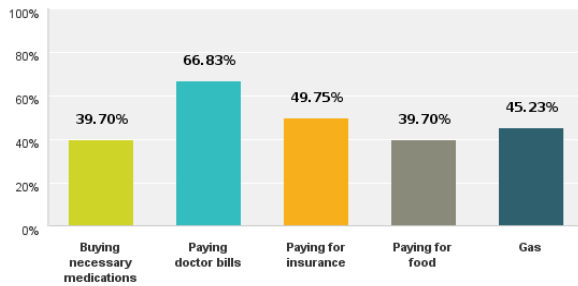
Q7 What was your total household income in 2012?

Answered: 416 Skipped: 11



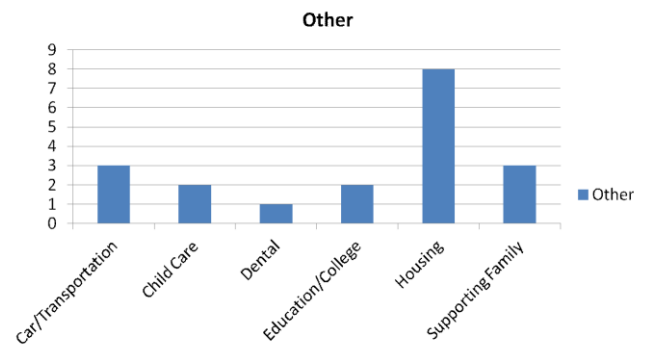
Q8 Do you have trouble paying for any of the following services/necessities? Check all that apply

Answered: 199 Skipped: 228



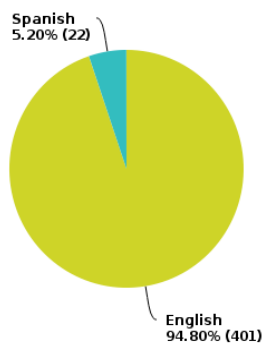
From Q8

Trouble paying for... Other:



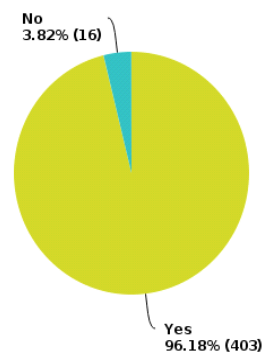
Q9 What is the primary language spoken in your home?

Answered: 423 Skipped: 4



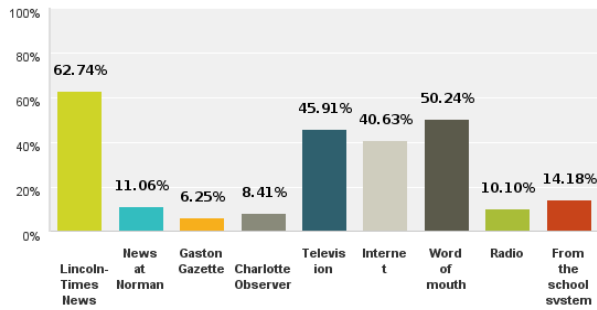
Q10 Do you have reliable transportation?

Answered: 419 Skipped: 8



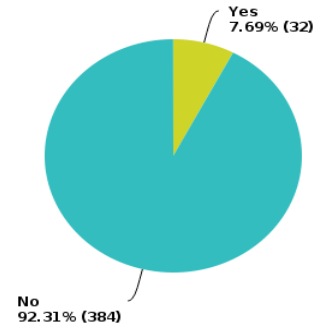
Q11 How do you receive information/news about Lincoln County services, events, reports? (Check all that apply)

Answered: 416 Skipped: 11



Q12

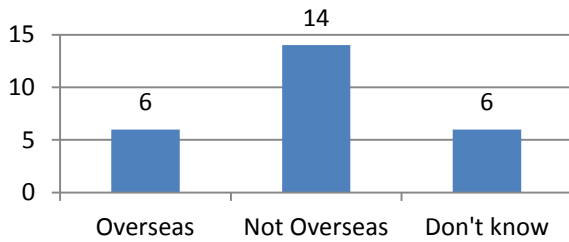
Is a member of your family currently serving in the military?



Q13 (From Q12)

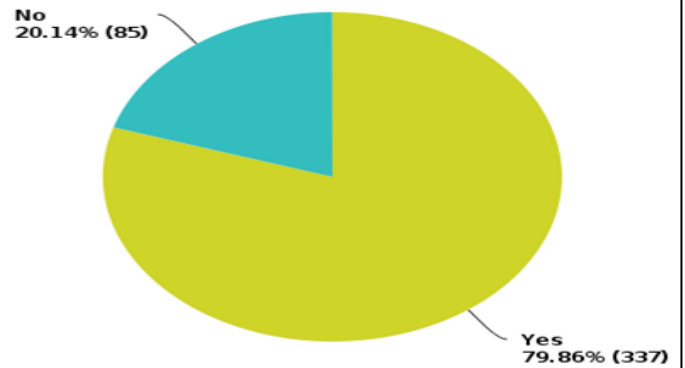
If your family member is serving in the military, are they currently serving overseas?

Serving in the Military



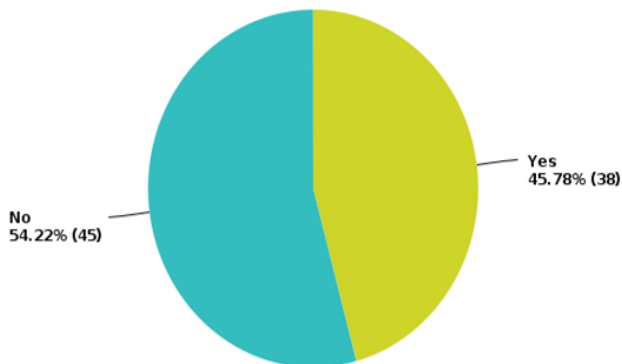
Q14 Do you have internet access at home?

Answered: 422 Skipped: 5



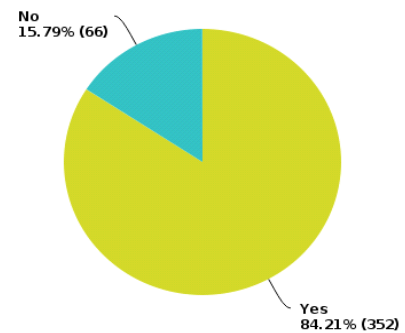
Q15 Do you have convenient internet access somewhere else?

Answered: 83 Skipped: 344



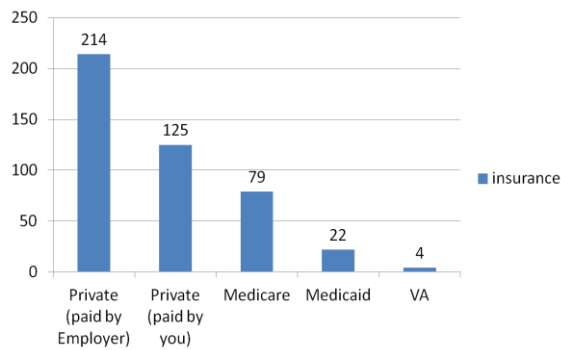
Q16 Do you have health insurance?

Answered: 418 Skipped: 9



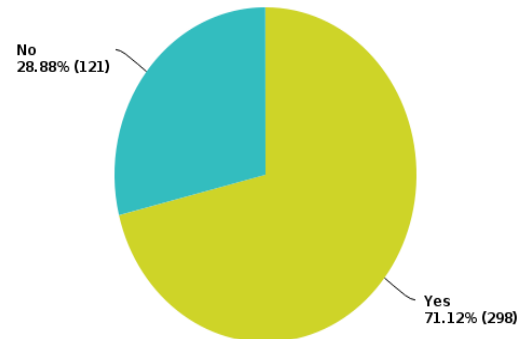
Q17 from Q16

Type of Insurance



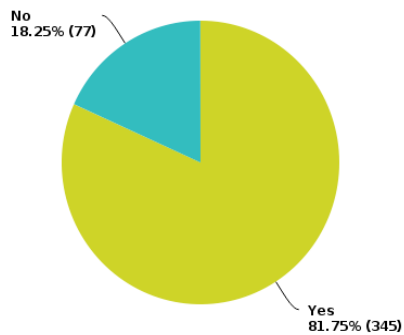
Q18 Do you receive most of your medical services in Lincoln County?

Answered: 419 Skipped: 8



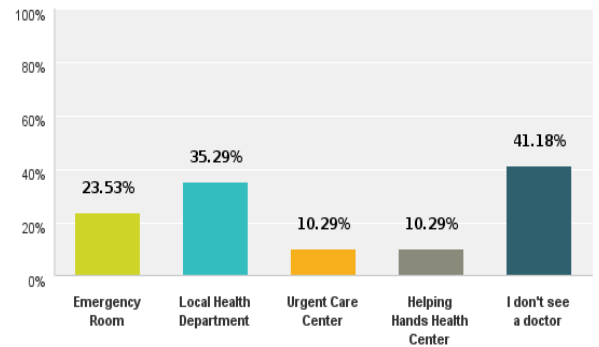
Q19 Do you have a doctor you see regularly? (Medical Home/ Primary Doctor)

Answered: 422 Skipped: 5



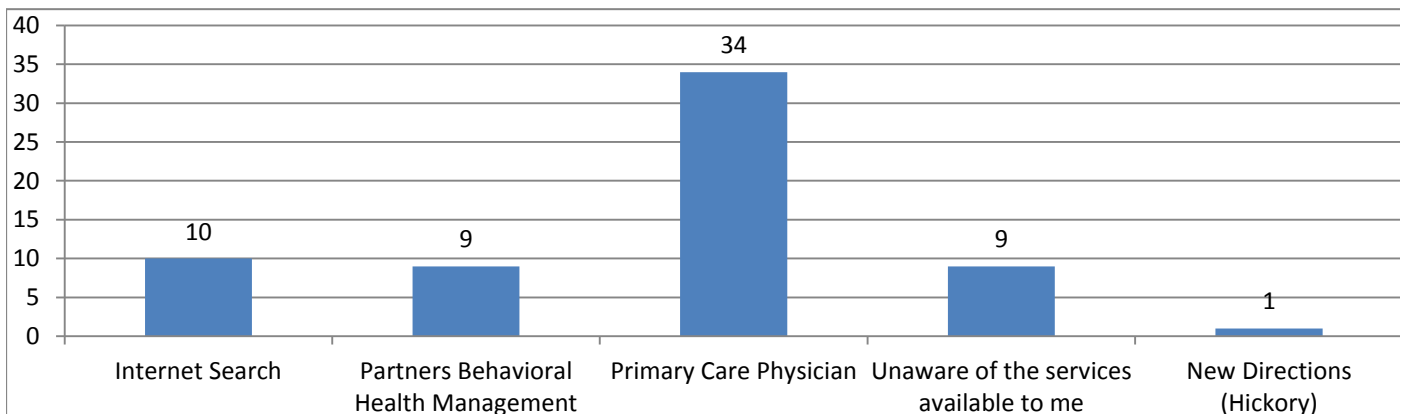
Q20 What is your source for medical care?

Answered: 68 Skipped: 359



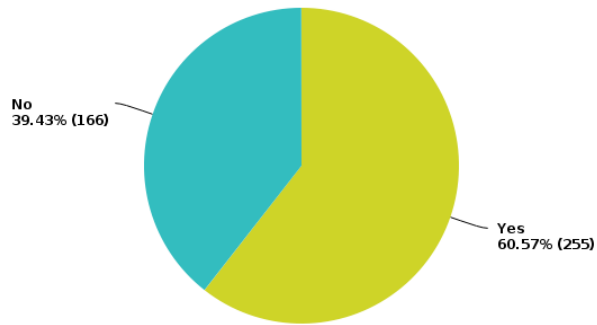
Q21

Have you or a family member accessed mental health services in the past year? If so, which of the following have you accessed? (Select all that apply)



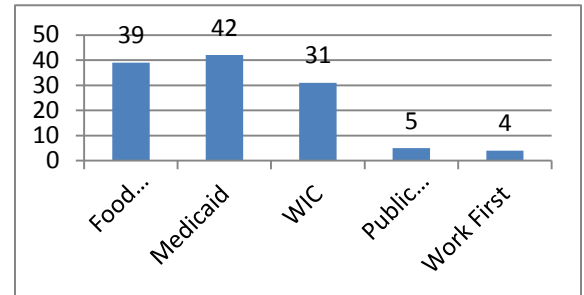
Q22 Do you have dental insurance?

Answered: 421 Skipped: 6



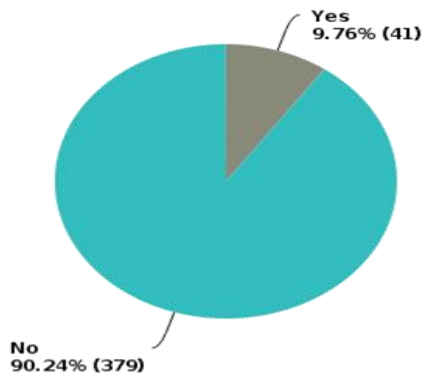
Q23

Do you receive any of the following services?
(Select all that apply)



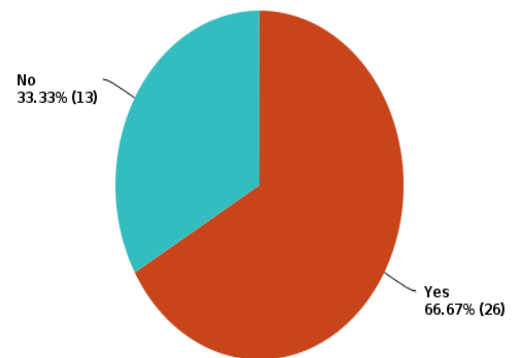
Q24 Do you smoke or use smokeless tobacco?

Answered: 420 Skipped: 7



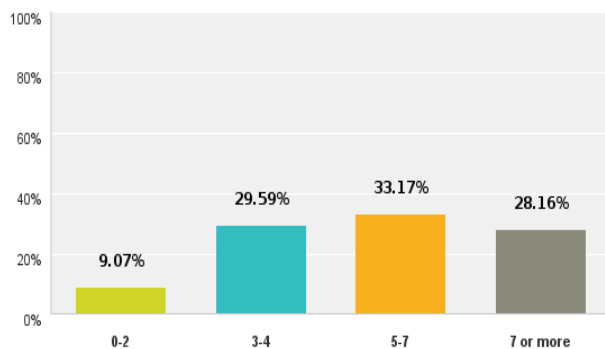
Q25 In the last year, have you tried to quit using tobacco products?

Answered: 39 Skipped: 388



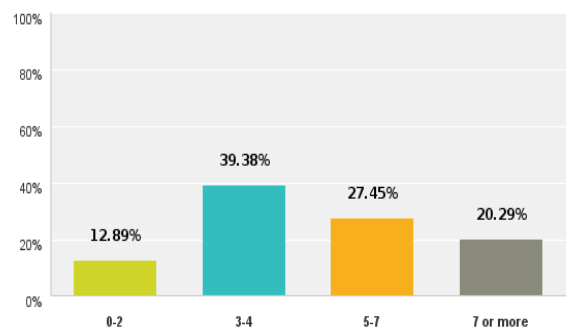
Q26 How many homemade meals do you consume a week?

Answered: 419 Skipped: 8



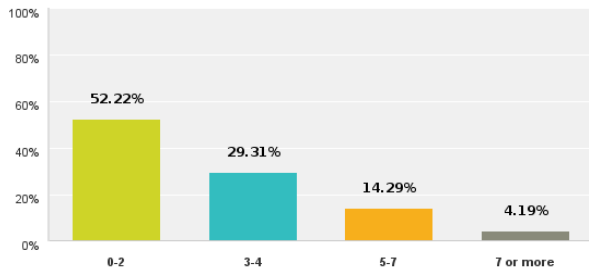
Q27 How many of your meals each week include fresh fruits and vegetables?

Answered: 419 Skipped: 8



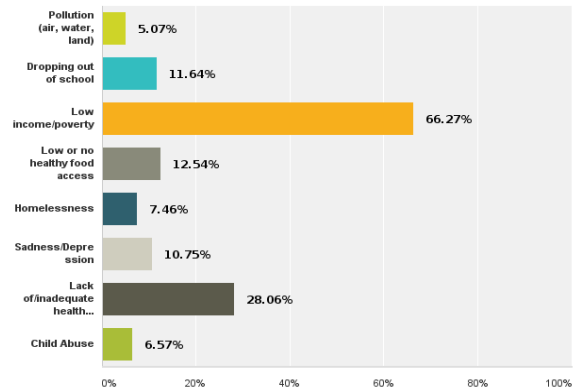
Q28 How many days a week do you engage in at least 30 minutes of cardiovascular physical activity?

Answered: 406 Skipped: 21



Q29 In your opinion, which one issue most affects the quality of life in Lincoln County?

Answered: 335 Skipped: 92



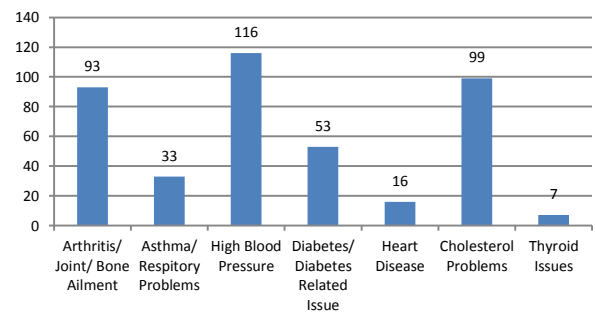
(From Q29)

Quality of Life Issue Comments

- Affordable Housing
- Domestic Violence (2)
- Drugs (5)
- Economy
- Education (2)
- Elderly Services
- Unemployment/ Jobs (6)
- Lack of Public Recreational Facilities
- Lack of Medical Care
- Political Issues (3)

Q30

Have you been diagnosed with any of the following? (Select all that apply)



(From Q30)

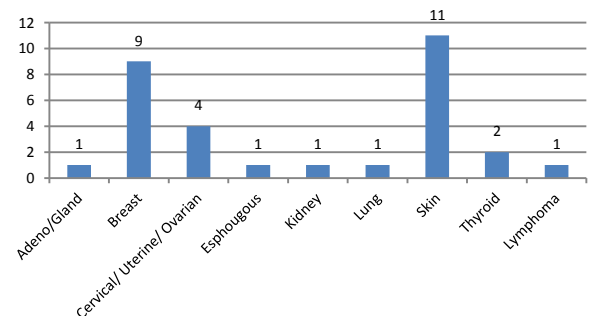
Other Diagnoses

- Fibromyalgia
- Sinus
- Vitamin Deficiency
- Barrett's Esophagus
- Lyme Disease
- Oropharyngeal Squamous Cell Carcinoma
- Bipolar
- PCOS
- Brain Tumor

Q31 and Q32

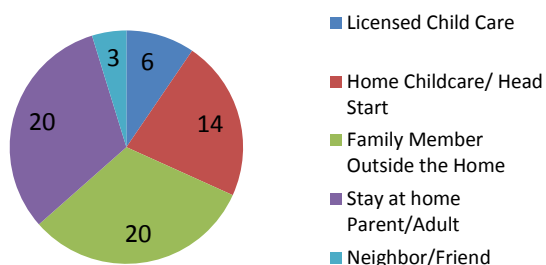
Have you ever been diagnosed with cancer? If yes, what type?

9% of respondents reported having a cancer diagnosis



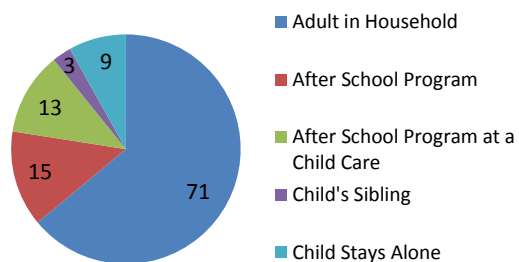
Q33

If you have children under 5 years old, where do they receive childcare services?



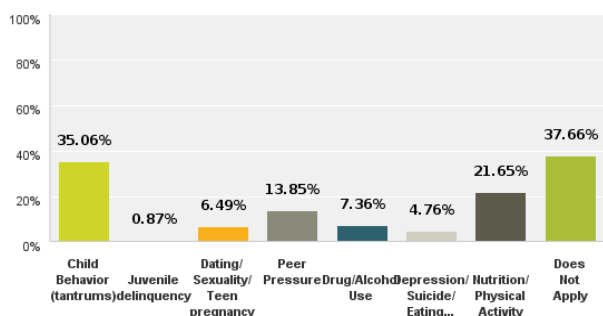
Q34

If you have children ages 6-12, who provides care for them after school?



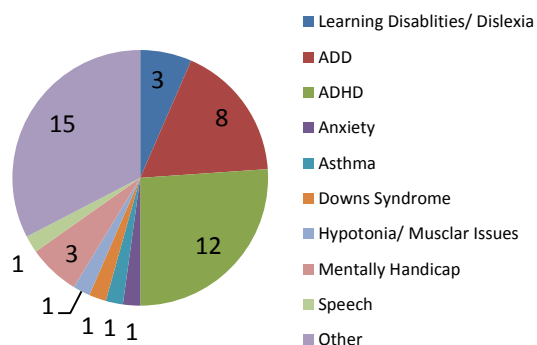
Q35 What are your most challenging parenting issues? Check all that apply

Answered: 231 Skipped: 196



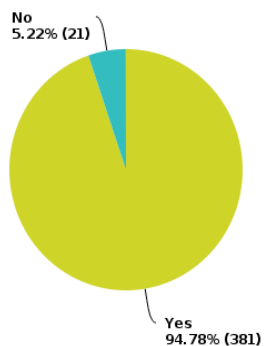
Q36

If your child has been diagnosed with a special need, which was he/she diagnosed with?



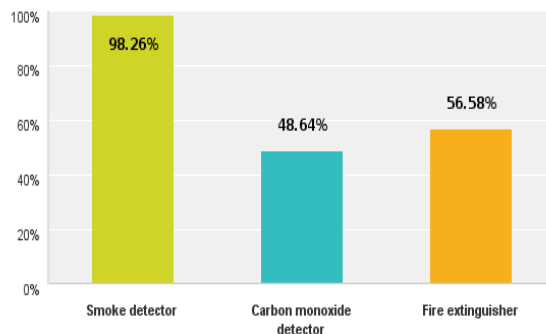
Q37 Do you feel safe in Lincoln County?

Answered: 402 Skipped: 25



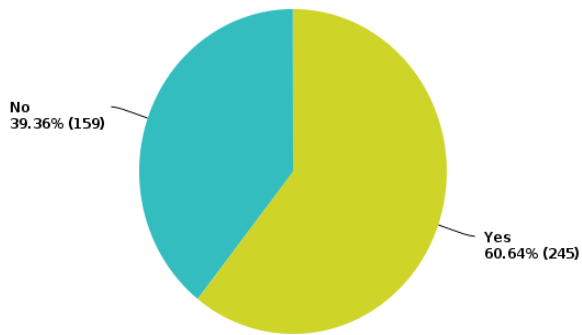
Q38 Does your household have a working: Check all that apply

Answered: 403 Skipped: 24



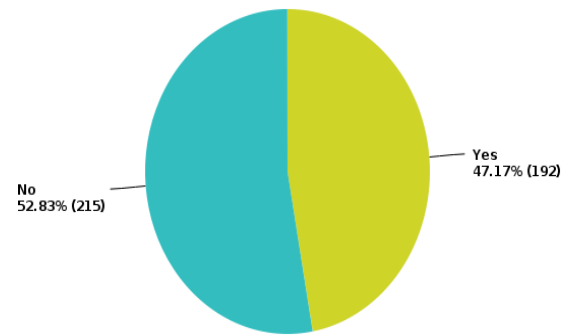
Q39 Does your family have a Family Emergency Plan?

Answered: 404 Skipped: 23



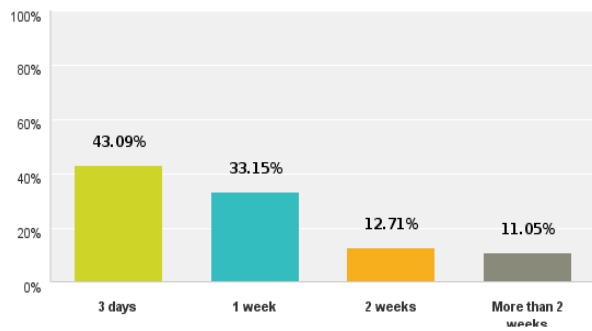
Q40 Does your family have a basic emergency supply kit?

Answered: 407 Skipped: 20



Q41 How many days worth of supplies does your emergency kit contain?

Answered: 181 Skipped: 246



Appendix A

Community Health Assessment Team Members

Lincoln County Partnership for Health	
Name	Agency
Amy Tyler, MSW	Lincoln County Schools
Belinda Branson	Lincoln County Schools
Brandi Davis	Lincoln County Health Department
Caitlyn Floyd	Carolinas Medical Center- Lincoln
Debbie Hartsell	Emergency Management
Donna Blake	Gaston College
Donna Norwood, RN	Lincoln County Health Department
Elizabeth Carroll	Partnership for Children Lincoln/ Gaston
Elizabeth Joy Smith, RN, BSN	Lincoln County Health Department
Erma Deen Hoyle	Lincoln County Parks & Rec
Gladys Hollis	Lincoln County Health Department
Gwen McBee, RN, CDE	Carolinas Medical Center- Lincoln
Harriet Lineberger	Lincoln County Board of Health
Jessica Towery	Lincoln County DSS/ PFCLG
Jordan Frye	Carolinas Medical Center- Lincoln
Juliana Whitaker	Lincoln County Health Department
Kara Brown	Lincoln Economic Development Association
Kathy Caudle	NC DPI Lincoln County Schools
Kellie Hull, MPH	CTG Region 4
Kim Maguire	Partners BHM
Krista Phillips, RN	Lincoln County Schools & Lincoln County Health Department
Laurel Morrow, CPP	Gaston College
Leigh Guth, M.Ed	NC Cooperative Extension Service
Lena Allen	Lincoln County Health Department
Lucy Garcia	Lincoln County Health Department
Luz Lopez	Multicultural Center of Hope
Maggie Dollar	Lincoln County Health Department
Marissa Brooks	Lincoln County Health Department
Marti Hovis	Lincoln County Senior Service
Mary Elaine Knight	Susan G. Komen Grant Coordinator
Melinda Houser	NC Cooperative Extension Service
Missy Calloway	Lincoln County Parks & Rec
Nicole Avery	Lincoln County Health Department
Pam Null	Carolinas Medical Center- Lincoln
Prissy Helms, RDH, BS	NC Oral Health Branch
Rachel Carpenter	Lincoln County Health Department
Sarah Tench	Lincoln County Health Department
Scott Sneed	Lincoln County Health Department
Shannon Alfaro, RN	Lincoln County Health Department
Stacy Bryant	Partners BHM
Susan McCracken, MSW	Lincoln County DSS
Teena Leonard	Lincoln County Health Department
Wanda Backus	Lincoln County Health Department
Yerby Ray	United Way of Lincoln County

2013 Board of Health Members

2013 Board of Health Members

Dentist Dr. Cordell Scott, II, DMD Chairman	Public Member Kathy Caudle Vice-Chairman	Optometrist Dr. Robert D. Hitt, OD
Public Member Harriet P. Lineberger	Pharmacist Donnie Davis, Jr., RPh	Public Member Candance Heavner
County Commissioner Cecelia Martin	Engineer Kirk Gavel, P.E.	Nurse Ginger Lusk, RN
Physician Dr. Jermeliah Martin	Veterinarian Vacant	

Appendix B

2013 Community Health Assessment Survey



Lincoln County Health Department

151 Sigmon Road
Lincolnton, NC 28092
Phone: 704-736-8634
Fax: 704-732-9034
Margaret B. Dollar, M.Ed.
Health Director



April 2013

Dear Resident,

Every four years we at the Health Department conduct a Community Health Assessment. I have enclosed the survey for you to complete. The information that you tell us in the survey helps us develop programs that will be the most beneficial to you and your family. This survey is anonymous and we do not include your name anywhere in the reports.

Please complete the enclosed survey and mail it back to us at the address at the top of the page. You may also drop it off at the Health Department if you are in the area. If you have any questions please don't hesitate to call me. You are free to add additional concerns or health priorities at the bottom of the survey.

It is our job to help make you healthier. Please help us do that by sending in your information.

Thank you so much for your time,

**Health Educator
704-736-2023**



Lincoln County, NC Community Health Assessment 2013 Survey

Note: To be completed by Lincoln County residents ONLY!



Demographics

1. What is your zip code? _____
2. What age group are you in?
 - a. 18-25 e. 56-65
 - b. 26-35 f. 66-75
 - c. 36-45 g. 76-85
 - d. 46-55 h. 85 +
3. What is your gender?
 - a. Male b. Female
4. What is the highest grade you completed?
 - a. Some high school
 - b. High school graduate or GED
 - c. Some college
 - d. Associates Degree
 - e. Bachelor's degree
 - f. Masters degree
 - g. Doctorate
5. What is your race/ethnicity? (Please circle all that apply)
 - a. White/Caucasian
 - b. Black/African American
 - c. Hispanic/Latino
 - d. Native American
 - e. Asian/Pacific Islander
 - f. Other
6. Are you employed?
 - a. No c. Part time
 - b. Full Time d. Both
7. What was your total household income in 2012?
 - a. less than \$10,000
 - b. \$10,000-\$20,000
 - c. \$20,000-\$29,999
 - d. \$30,000-\$49,999
 - e. \$50,000-\$74,999
 - f. \$75,000-\$99,999
 - g. \$100,000 or more
 - h. Don't know

8. Do you have trouble paying for any of the following services/necessities? Check all that apply
- a. Buying necessary medications
 - b. Paying doctor bills
 - c. Paying for insurance
 - d. Paying for food
 - e. Gas
 - f. Other _____
9. What is the primary language spoken in your home?
- a. English
 - b. Spanish
 - c. Russian
 - d. Vietnamese
 - e. Other
10. Do you have reliable transportation?
- a. YES
 - b. NO
11. How do you receive information/news about Lincoln County services, events, reports?
- a. Lincoln-Times News
 - b. News at Norman
 - c. Gaston Gazette
 - d. Charlotte Observer
 - e. Television
 - f. Internet
 - g. Word of Mouth
 - h. Radio
 - i. From the school system
12. Is a member of your family currently serving in the military? If so, are they currently serving overseas?
- a. YES
 - b. NO
13. Do you have internet access at home?
- a. YES
 - b. NO
- If no, do you have convenient access somewhere else?
- a. YES
 - b. NO

Medical

14. Do you have health insurance?

- a. YES b. NO

15. If yes, what type do you have?

- a. Private (paid by employer)
b. Private (paid by you)
c. Medicare
d. Medicaid
e. Other: _____

16. Do you receive most of your medical services in Lincoln County?

- a. YES b. NO

17. Do you have a doctor you see regularly?

- a. YES b. NO

If no, what is source for medical care?

- a. Emergency Room
b. Local Health Department
c. Urgent Care Center
d. Helping Hands Health Center
e. Don't see a doctor

18. Have you or a family member accessed mental health services in the past year?

If so, which of the following have you accessed? Circle all that apply.

- a. Internet search engines
b. Partners Behavioral Health Management (formerly Pathways LME)
c. Primary care physician
d. Unaware of the services available to me
e. Other: _____

19. Do you have dental insurance?

- a. YES b. NO

20. Do you receive any of the following services? Circle all that apply

- a. Food stamps
b. Medicaid
c. WIC
d. Public Housing
e. Work First
f. None of the above

21. Do you smoke or use smokeless tobacco (dip)?

- a. YES b. NO

If yes, in the last year have you tried to quit?

- a. YES b. NO

22. How many homemade meals do you consume a week?

- a. 0-2
- b. 3-4
- c. 5-7
- d. 7 or more

23. How many of your meals each week include fresh fruits and vegetables?

- a. 0-2
- b. 3-4
- c. 5-7
- d. 7 or more

24. How many days a week do you engage in at least 30 minutes of cardiovascular physical activity?

- a. 0-2
- b. 3-4
- c. 5-7
- d. 7 or more

25. In your opinion, which one issue most affects the quality of life in Lincoln County?

- a. Pollution (air, water, land)
- b. Dropping out of school
- c. Low income/poverty
- d. Low or no healthy food access
- e. Homelessness
- f. Sadness/Depression
- g. Lack of/inadequate health insurance
- h. Child abuse
- i. Other: _____

26. Have you been diagnosed with any of the following (circle all that apply)?

- a. Arthritis/Joint Bone Ailment
- b. Asthma/Respiratory Problems
- c. High Blood Pressure
- d. Diabetes
- e. Heart Disease
- f. Cholesterol Problems
- g. Other (please list) _____

27. Have you ever been diagnosed with cancer?

- a. YES b. NO

If yes, what type? _____

Parenting

28. If you have children under 5 years old, where do they receive childcare services?

- a. Licensed Childcare Center
- b. Home Childcare/Head Start
- c. From a family member outside the home
- d. Stay at home mom/dad or other adult inside the home
- e. From a neighbor or friend
- f. Other

29. If you have children ages 6-12, who provides care for them after school?

- a. Adult in the household
- b. After school program
- c. After school program at a childcare facility
- d. Child's sibling
- e. Child stays alone

30. What are your most challenging parenting issues (circle all that apply)?

- a. Child behavior (tantrums)
- b. Juvenile delinquency
- c. Dating/sexuality/teen pregnancy
- d. Peer Pressure
- e. Drug/Alcohol Use
- f. Depression/Suicide/Eating Disorder/Other mental health issue
- g. Nutrition/Physical Activity

31. Are you parenting a child that has been diagnosed with a special need (ADHD, Autism Spectrum Disorder, etc.)?

- a. YES b. NO

If yes, please explain? _____

Public Safety/Preparedness

32. Do you feel safe in Lincoln County?
a. YES b. NO
33. Does your household have a working....circle all that apply
a. Smoke detector
b. Carbon monoxide detector
c. Fire extinguishers
34. Does your family have a Family Emergency Plan?
a. YES b. NO
35. Does your family have a basic emergency supply kit?
a. YES b. NO
- If YES, how many days worth?
a. 3 days worth
b. 1 week
c. 2 weeks
d. More than 2 weeks

Appendix C

Lincoln Economic Development Association 2013 Fact Book